

# **METAL-FACH**

**16-100 SOKÓLKA**

**ul. KRESOWA 62**

**PARTS CATALOGUE  
FRONT LOADERS T229  
"HERKULES"**

## TABLE OF CONTENTS

1) Loader set .....	3
2) Extension arm set .....	5
3) Assembly frame set .....	8
4) Connector III set .....	10
5) Connector IV set .....	11
6) Supporting plate set .....	12
7) Levelling indicator set .....	14
8) Two-section hydraulic system .....	16
9) Two-section hydraulic system with hydraulic accumulator .....	19
10) Control system for two-section loader .....	22
11) Solenoid valve unit .....	24
12) Hydraulic accumulator unit .....	26
13) Three-section hydraulic system .....	28
14) Three-section hydraulic system with hydraulic accumulator .....	31
15) Control system for three-section loader .....	33
16) Overflow valve unit .....	36
ACCESSORIES FOR FRONT LOADER	
17) Ballast box .....	38
18) Bale grip .....	39
19) Bale grip version 2 .....	41
20) Bale grip version 3 .....	43
21) Silage grip version with 1 actuator .....	45
22) Silage grip version with 2 actuators .....	48
23) Grip bucket .....	51
24) Bale fork .....	53
25) Manure fork .....	55
26) Sillage cutter .....	56
27) Pallet fork .....	58

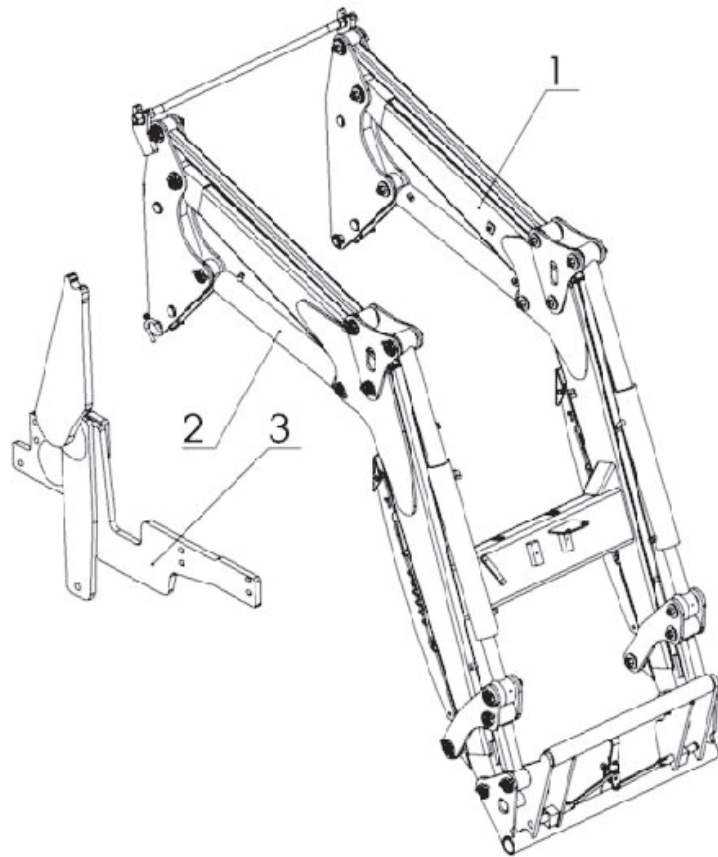


Fig. 1 Loader set

**Table no. 1 Loader set**

Item	Name of assembly or part	Loader type					
		T229-1		T229-K		T229-D	
		Frame type		Frame type		Frame type	
		Euro	SMS	Euro	SMS	Euro	SMS
1	Extension arm set	T229-110	T229-100	T229-K10	T229-K00	T229-D10	T229-D00
2	Hydraulic system						
3	Frame mounted on tractor						



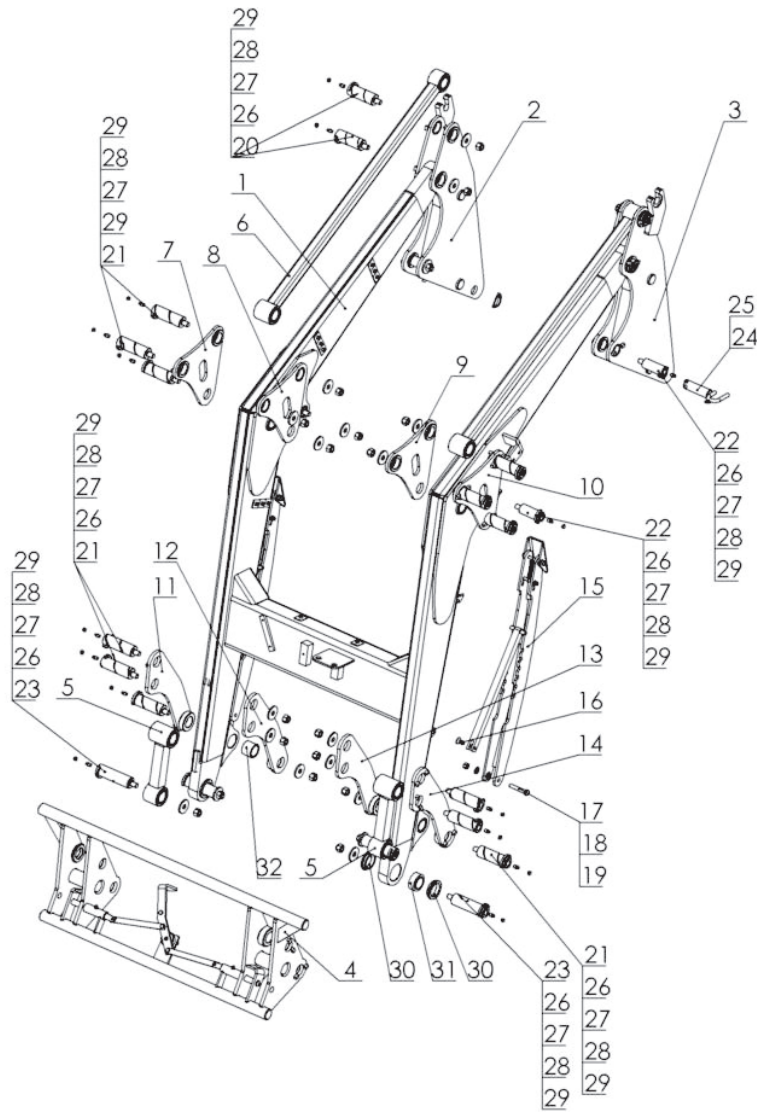


Fig. 2 Extension arm set

**Table no. 2 Extension arm set**

Item	Name of part or set	Part number or index						Qty
		Loader type						
		T229-100	T229-110	T229-K00	T229-K10	T229-D00	T229-D10	
1	Extension arm	T229-1.018.000.000.4	T229-1.018.000.000.4	T229-K.018.000.000.4	T229-K.018.000.000.4	T229-D.018.000.000.4	T229-D.018.000.000.4	1
2	Lever I right	T229-1.012.000.000.1P	T229-1.012.000.000.1	T229-1.012.000.000.1	T229-1.012.000.000.1	T229-1.012.000.000.1	T229-1.012.000.000.1	1
3	Lever I left	T229-1.012.000.000.1L	T229-1.012.000.000.1L	T229-1.012.000.000.1L	T229-1.012.000.000.1L	T229-1.012.000.000.1L	T229-1.012.000.000.1L	1
4	Assembly frame set	T229-1.008.000.000	T229-1.080.000.000.1	T229-K.008.000.000	T229-K.080.000.000	T229-K.008.000.000	T229-K.080.000.000	1
5	Connector III set	T229-1.010.000.000	T229-1.010.000.000	T229-1.010.000.000	T229-1.010.000.000	T229-1.010.000.000	T229-1.010.000.000	2
6	Connector IV set	T229-1.011.000.000	T229-1.011.000.000	T229-1.011.000.000	T229-1.011.000.000	T229-D.011.000.000	T229-D.011.000.000	2
7	Bracket II right	T229-1.000.014.000.1P	T229-1.000.014.000.1P	T229-1.000.014.000.1P	T229-1.000.014.000.1P	T229-1.000.014.000.1P	T229-1.000.014.000.1P	1
8	Bracket I right	T229-1.000.013.000.1P	T229-1.000.013.000.1P	T229-1.000.013.000.1P	T229-1.000.013.000.1P	T229-1.000.013.000.1P	T229-1.000.013.000.1P	1
9	Bracket I left	T229-1.000.013.000.1L	T229-1.000.013.000.1L	T229-1.000.013.000.1L	T229-1.000.013.000.1L	T229-1.000.013.000.1L	T229-1.000.013.000.1L	1
10	Bracket II left	T229-1.000.014.000.1L	T229-1.000.014.000.1L	T229-1.000.014.000.1L	T229-1.000.014.000.1L	T229-1.000.014.000.1L	T229-1.000.014.000.1L	1
11	Bracket IV right	T229-1.000.016.000P	T229-1.000.016.000P	T229-1.000.016.000P	T229-1.000.016.000P	T229-1.000.016.000P	T229-1.000.016.000P	1
12	Bracket III right	T229-1.000.015.000P	T229-1.000.015.000P	T229-1.000.015.000P	T229-1.000.015.000P	T229-1.000.015.000P	T229-1.000.015.000P	1
13	Bracket III left	T229-1.000.015.000L	T229-1.000.015.000L	T229-1.000.015.000L	T229-1.000.015.000L	T229-1.000.015.000L	T229-1.000.015.000L	1
14	Bracket IV left	T229-1.000.016.000L	T229-1.000.016.000L	T229-1.000.016.000L	T229-1.000.016.000L	T229-1.000.016.000L	T229-1.000.016.000L	1
15	Support foot set	T229-1.066.000.000	T229-1.066.000.000	T229-1.066.000.000	T229-1.066.000.000	T229-1.066.000.000	T229-1.066.000.000	2
16	Countersunk bolt 12x25 galv. DIN7991	POD-ELZ-000482	POD-ELZ-000482	POD-ELZ-000482	POD-ELZ-000482	POD-ELZ-000482	POD-ELZ-000482	2

17	Bolt 12x70 galv.	23S12/70OC 8.8	23S12/70OC 8.8	23S12/70OC 8.8	23S12/70OC 8.8	23S12/70OC 8.8	23S12/70OC 8.8	2
18	Plain washer, 13	23P12OC	23P12OC	23P12OC	23P12OC	23P12OC	23P12OC	2
19	Self-locking nut, M12	23NS12OC	23NS12OC	23NS12OC	23NS12OC	23NS12OC	23NS12OC	2
20	Pin II set	25ST-229-1 000.020.000	25ST-229-1 000.020.000	25ST-229-1 000.020.000	25ST-229-1 000.020.000	25ST-229-1 000.020.000	25ST-229-1 000.020.000	4
21	Pin III set	25ST-229-1 000.021.000	25ST-229-1 000.021.000	25ST-229-1 000.021.000	25ST-229-1 000.021.000	25ST-229-1 000.021.000	25ST-229-1 000.021.000	12
22	Pin IV set	25ST-229-1 000.022.000	25ST-229-1 000.022.000	25ST-229-1 000.022.000	25ST-229-1 000.022.000	25ST-229-1 000.022.000	25ST-229-1 000.022.000	4
23	Pin II set	25ST-229-1 000.020.000	25ST-229-1 000.200.000.1	25ST-229-1 000.020.000	25ST-229-1 000.200.000.1	25ST-229-1 000.020.000	25ST-229-1 000.200.000.1	4
24	Locking pin set	25ST-229-1 000.029.000	25ST-229-1 000.029.000	25ST-229-1 000.029.000	25ST-229-1 000.029.000	25ST-229-1 000.029.000	25ST-229-1 000.029.000	2
25	Farming cotter pin	23PR11	23PR11	23PR11	23PR11	23PR11	23PR11	2
26	Grease nipple, M10x1	23SM10/1	23SM10/1	23SM10/1	23SM10/1	23SM10/1	23SM10/1	24
27	Protective cap	23KOC	23KOC	23KOC	23KOC	23KOC	23KOC	24
28	Special washer dia. 17x50x6	POD-ELZ-000455	POD-ELZ-000455	POD-ELZ-000455	POD-ELZ-000455	POD-ELZ-000455	POD-ELZ-000455	24
29	Self-locking nut M16	23NS16OC	23NS16OC	23NS16OC	23NS16OC	23NS16OC	23NS16OC	24
30	Stop sleeve I	T229-1.018.000.011	T229-1.018.000.011	T229-1.018.000.011	T229-1.018.000.011	T229-1.018.000.011	T229-1.018.000.011	8
31	Self-aligning bearing	25L040GE	25L040GE	25L040GE	25L040GE	25L040GE	25L040GE	4
32	Self-lubricating bush	25T40/50/40	25T40/50/40	25T40/50/40	25T40/50/40	25T40/50/40	25T40/50/40	2

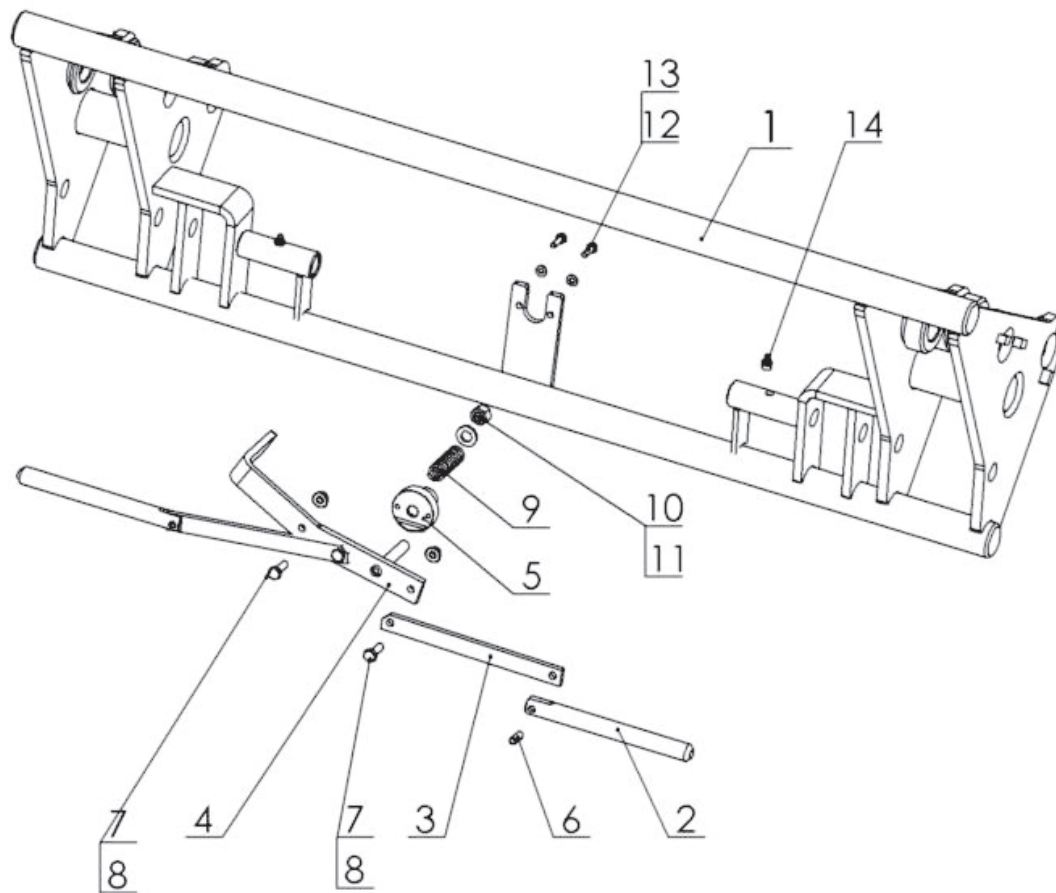


Fig. 3 Assembly frame set

**Table no. 3 Assembly frame set**

Item	Name of assembly or part	Part number or index						Qty
		Loader type						
		T229-100	T229-110	T229-K00	T229-K10	T229-D00	T229-D10	
1	Welded frame	T229-1.008.001.000	T229-1.080.001.000.1	T229-K.008.001.000	T229-K.080.001.000	T229-K.008.001.000	T229-K.080.001.000	1
2	Pin	T229-1.008.002.003	T229-1.080.002.003	T229-1.008.002.003	T229-1.080.002.003	T229-1.008.002.003	T229-1.080.002.003	2
3	Arm II	T229-1.008.002.002	T229-1.008.002.002	T229-1.008.002.002	T229-1.008.002.002	T229-1.008.002.002	T229-1.008.002.002	2
4	Arm I	T229-1.008.002.100.1	T229-1.008.002.100.1	T229-1.008.002.100.1	T229-1.008.002.100.1	T229-1.008.002.100.1	T229-1.008.002.100.1	1
5	Holder	T229-1.008.002.004	T229-1.008.002.004	T229-1.008.002.004	T229-1.008.002.004	T229-1.008.002.004	T229-1.008.002.004	1
6	Spring pin	23K8/25	POD-ELZ-000347	23K8/25	POD-ELZ-000347	23K8/25	POD-ELZ-000347	2
7	Bolt, M8x25	23S8/25OC8.8	23S8/25OC8.8	23S8/25OC8.8	23S8/25OC8.8	23S8/25OC8.8	23S8/25OC8.8	3
8	Self-locking nut, M8	23NS8OC	23NS8OC	23NS8OC	23NS8OC	23NS8OC	23NS8OC	3
9	Spring	23S3/12.5/60	23S3/12.5/60	23S3/12.5/60	23S3/12.5/60	23S3/12.5/60	23S3/12.5/60	1
10	Self-locking nut, M12	23NS12OC	23NS12OC	23NS12OC	23NS12OC	23NS12OC	23NS12OC	1
11	Plain washer, 13	23P12OC	23P12OC	23P12OC	23P12OC	23P12OC	23P12OC	1
12	Bolt, M6x20	23S6/20	23S6/20	23S6/20	23S6/20	23S6/20	23S6/20	2
13	Plain washer, 6.4	23P6OOC	23P6OOC	23P6OOC	23P6OOC	23P6OOC	23P6OOC	2
14	Grease nipple, M10x1	NONE	23SM10/1	NONE	23SM10/1	NONE	23SM10/1	2

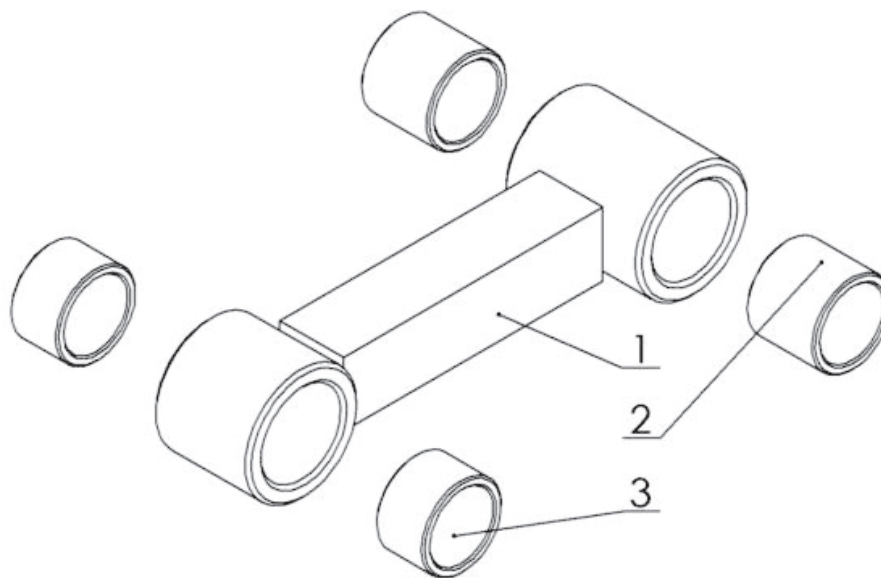


Fig. 4 Connector III set

Table no. 4 Connector III set

Item	Name of assembly or part	Part number or index						Qty
		Loader type						
		T229-100	T229-110	T229-K00	T229-K10	T229-D00	T229-D10	
1	Connector	T229-1 010.001.000	T229-1 010.001.000	T229-1 010.001.000	T229-1 010.001.000	T229-1 010.001.000	T229-1 010.001.000	1
2	Self-lubricating bush I	25T40/50/42	25T40/50/42	25T40/50/42	25T40/50/42	25T40/50/42	25T40/50/42	2
3	Self-lubricating bush II	25T40/50/30	25T40/50/30	25T40/50/30	25T40/50/30	25T40/50/30	25T40/50/30	2

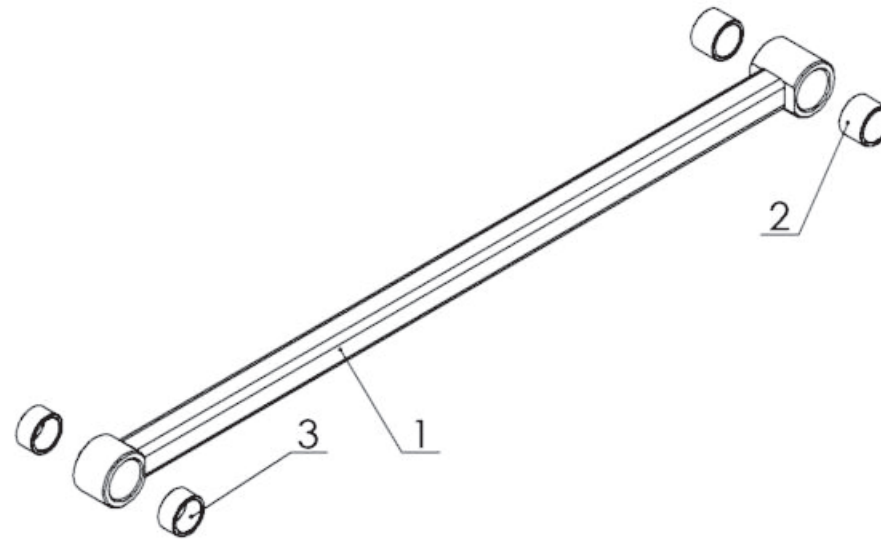


Fig. 5 Connector IV set

**Table no. 5 Connector IV set**

Item	Name of assembly or part	Part number or index						Qty
		Loader type						
		T229-100	T229-110	T229-K00	T229-K10	T229-D00	T229-D10	
1	Connector	T229-1 011.001.000	T229-1 011.001.000	T229-1 011.001.000	T229-1 011.001.000	T229-D 011.001.000	T229-D 011.001.000	1
2	Self-lubricating bush I	25T40/50/35	25T40/50/35	25T40/50/35	25T40/50/35	25T40/50/35	25T40/50/35	2
3	Self-lubricating bush II	25T40/50/25	25T40/50/25	25T40/50/25	25T40/50/25	25T40/50/25	25T40/50/25	2

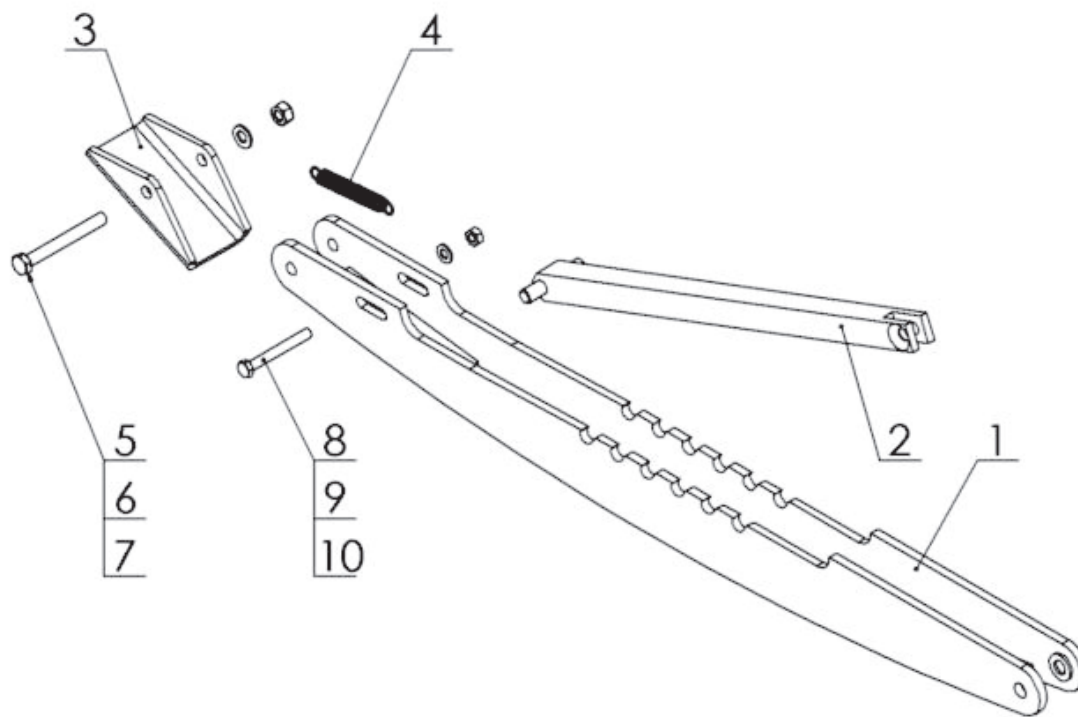


Fig. 6 Support foot set



**Table no. 6 Support foot set**

Item	Name of assembly or part	Part number or index						Qty
		Loader type						
		T229-100	T229-110	T229-K00	T229-K10	T229-D00	T229-D10	
1	Foot frame	T229-1 066.001.000.1	T229-1 066.001.000.1	T229-1 066.001.000.1	T229-1 066.001.000.1	T229-1 066.001.000.1	T229-1 066.001.000.1	1
2	Foot support	T229-1 066.003.000	T229-1 066.003.000	T229-1 066.003.000	T229-1 066.003.000	T229-1 066.003.000	T229-1 066.003.000	1
3	Foot	T229-1 066.000.002	T229-1 066.000.002	T229-1 066.000.002	T229-1 066.000.002	T229-1 066.000.002	T229-1 066.000.002	1
4	Spring	23SN1.5/13/90	23SN1.5/13/90	23SN1.5/13/90	23SN1.5/13/90	23SN1.5/13/90	23SN1.5/13/90	1
5	Bolt, M10x90	POD-ELZ-000462	POD-ELZ-000462	POD-ELZ-000462	POD-ELZ-000462	POD-ELZ-000462	POD-ELZ-000462	1
6	Plain washer, 10.5	23P10 82005	23P10 82005	23P10 82005	23P10 82005	23P10 82005	23P10 82005	1
7	Self-locking nut, M10	23NS10OC	23NS10OC	23NS10OC	23NS10OC	23NS10OC	23NS10OC	1
8	Bolt, M8x70	23S8/70OC	23S8/70OC	23S8/70OC	23S8/70OC	23S8/70OC	23S8/70OC	1
9	Plain washer, 8.4	23P8OOC	23P8OOC	23P8OOC	23P8OOC	23P8OOC	23P8OOC	1
10	Self-locking nut, M8	23NS8OC	23NS8OC	23NS8OC	23NS8OC	23NS8OC	23NS8OC	1

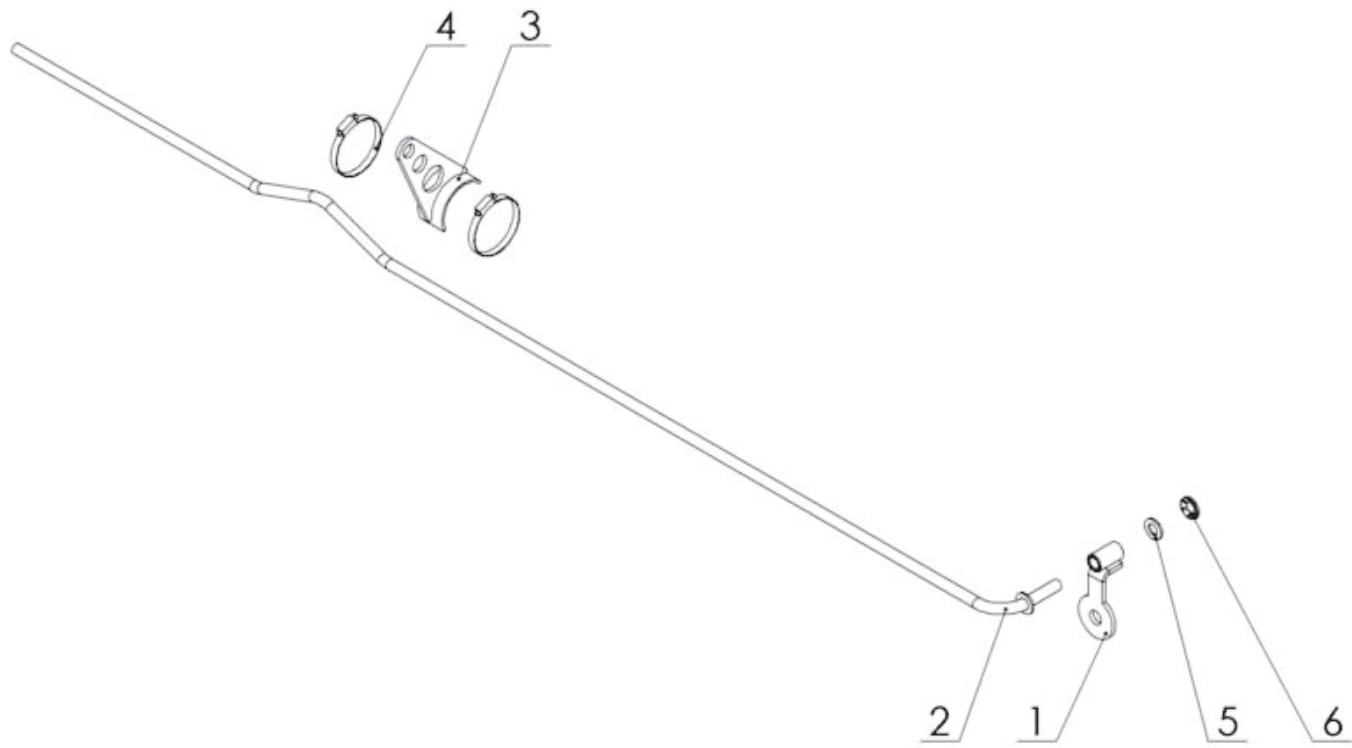


Fig. 7. Levelling indicator set

**Table no. 7 Levelling indicator set**

Item	Name of assembly or part	Part number or index						Qty
		Loader type						
		T229-100	T229-110	T229-K00	T229-K10	T229-D00	T229-D10	
1	Bracket I	T229-1 051.001.000	T229-1 051.001.000	T229-1 051.001.000	T229-1 051.001.000	T229-1 051.001.000	T229-1 051.001.000	1
2	Indicator pipe	T229-1 051.002.000	T229-1 051.002.000	T229-1 051.002.000	T229-1 051.002.000	T229-1 051.002.000	T229-1 051.002.000	1
3	Bracket II	T229-1 051.003.000	T229-1 051.003.000	T229-1 051.003.000	T229-1 051.003.000	T229-1 051.003.000	T229-1 051.003.000	1
4	Worm band	POD-OGL-000361	POD-OGL-000361	POD-OGL-000361	POD-OGL-000361	POD-OGL-000361	POD-OGL-000361	2
5	Plain washer, 12	23P12OC	23P12OC	23P12OC	23P12OC	23P12OC	23P12OC	1
6	Spring protection	POD-ELZ-000494	POD-ELZ-000494	POD-ELZ-000494	POD-ELZ-000494	POD-ELZ-000494	POD-ELZ-000494	1

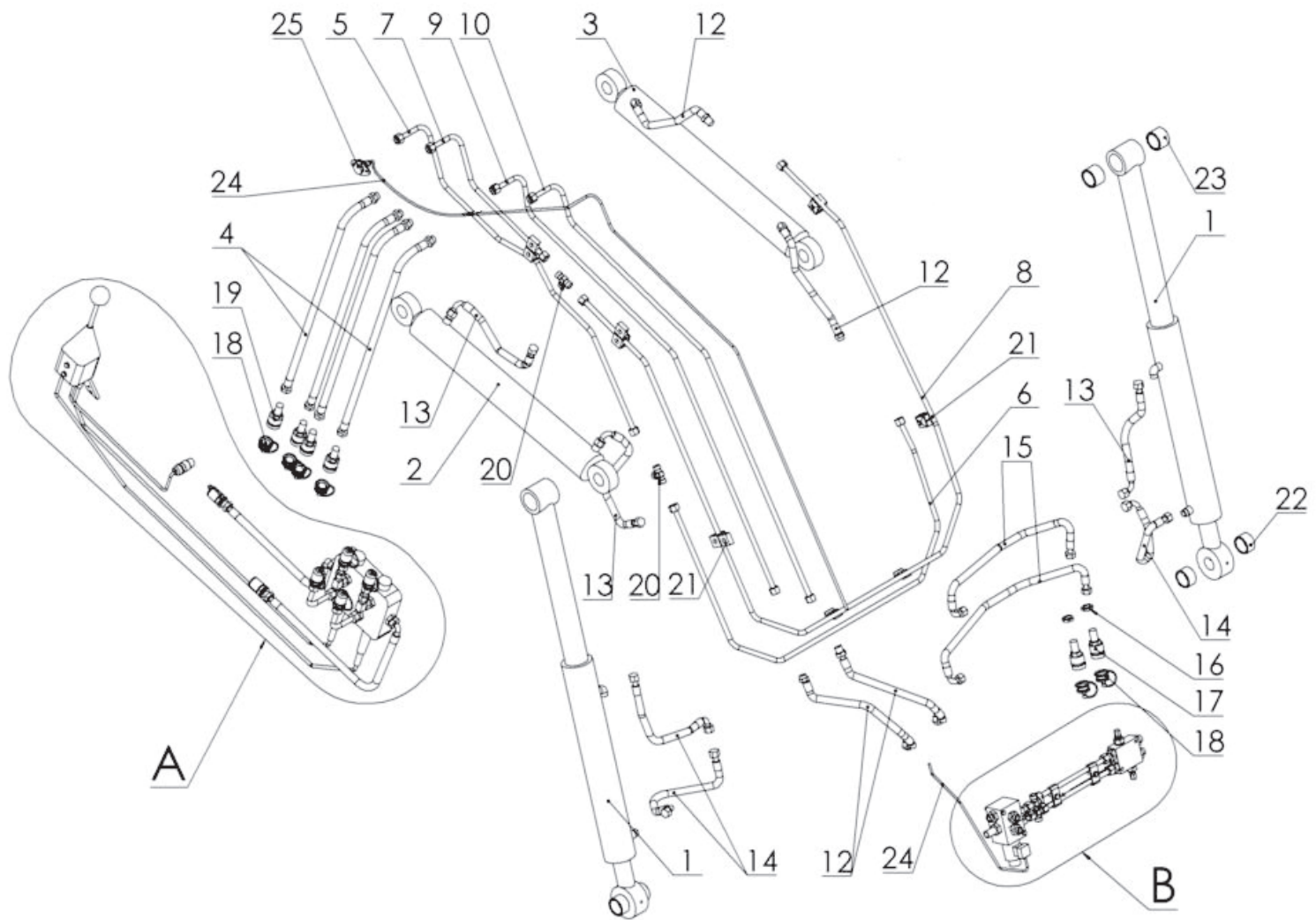


Fig. 8 Two-section hydraulic system

**Table no. 8 Two-section hydraulic system**

Item	Name of assembly or part	Part number or index					Qty
		Loader type					
		T229-1 lifting capacity 1300 kg	T229-1 lifting capacity 1600 kg	T229-K lifting capacity 1300 kg	T229-K lifting capacity 1600 kg	T229-D lifting capacity 1600 kg	
1	Actuator	24SCJ70/36/400	24SCJ80/45/400	24SCJ70/36/400	24SCJ80/45/400	24SCJ80/45/400	2
2	Right actuator	24SCJ70/40/500 P	24S90/45/500P	24SCJ70/40/500 P	24S90/45/500P	24SCJ90/45/500 S-40	1
3	Left actuator	24SCJ70/40/500	24S90/45/500L	24SCJ70/40/500	24S90/45/500L	24SCJ90/45/500	1
4	Hydraulic line	24PAB10/2-900 13/10	24PAB10/2-900 13/10	24PAB10/2-900 13/10	24PAB10/2-900 13/10	24PAB10/2-900 13/10	4
5	Hydraulic line, steel	24PST229- 1.000.044.001	24PST229- 1.000.044.001	24PST229- 1.000.044.001	24PST229- 1.000.044.001	24PST229- D.000.044.001	1
6	Hydraulic line, steel	POD-HPR-000118	POD-HPR-000118	POD-HPR-000121	POD-HPR-000121	POD-HPR-000117	1
7	Hydraulic line, steel	24PST229- 1.000.045.001	24PST229- 1.000.045.001	24PST229- 1.000.045.001	24PST229- 1.000.045.001	24PST229- D.000.045.001	1
8	Hydraulic line, steel	POD-HPR-000119	POD-HPR-000119	POD-HPR-000120	POD-HPR-000120	POD-HPR-000116	1
9	Hydraulic line, steel	24PST229- 1.000.046.001	24PST229- 1.000.046.001	24PST229- 1.000.046.001	24PST229- 1.000.046.001	24PST229- D.000.046.001.1	1
10	Hydraulic line, steel	24PST229- 1.000.047.001	24PST229- 1.000.047.001	24PST229- 1.000.047.001	24PST229- 1.000.047.001	24PST229- D.000.047.001.1	1
11	Hydraulic line, steel	24PST229- 1.000.048.001	24PST229- 1.000.048.001	24PST229- 1.000.048.001	24PST229- 1.000.048.001	24PST229- D.000.048.001.1	1
12	Hydraulic line	24PA90B10/2-400	24PA90B10/2-400	24PA90B10/2-400	24PA90B10/2-400	24PA90B10/2-400	4
13	Hydraulic line	POD-HPR-000110	POD-HPR-000110	POD-HPR-000110	POD-HPR-000110	POD-HPR-000110	3
14	Hydraulic line	24PA90A10/2-550	24PA90A10/2-550	24PA90A10/2-550	24PA90A10/2-550	24PA90A10/2-550	3
15	Hydraulic line	24PA90A10/2-750	24PA90A10/2-750	24PA90A10/2-750	24PA90A10/2-750	24PA90A10/2-750	2
16	Locknut M18x1.5	24P18/1.5	24P18/1.5	24P18/1.5	24P18/1.5	24P18/1.5	2

17	Euro valve-socket, M18x1.5 long	POD-HZW-000039	POD-HZW-000039	POD-HZW-000039	POD-HZW-000039	POD-HZW-000039	2
18	Socket valve cap	24ZGNE13	24ZGNE13	24ZGNE13	24ZGNE13	24ZGNE13	6
19	Euro valve-socket, M18x1.5	24ZG M18/1.5	24ZG M18/1.5	24ZG M18/1.5	24ZG M18/1.5	24ZG M18/1.5	4
20	Tee-connector	24KT18/18/18	24KT18/18/18	24KT18/18/18	24KT18/18/18	24KT18/18/18	2
21	HBK fixture	POD-HPZ-000010-1	POD-HPZ-000010-1	POD-HPZ-000010-1	POD-HPZ-000010-1	POD-HPZ-000010-1	13
22	Distance bush	T229-1.000.000.027	T229-1.000.000.027	T229-1.000.000.027	T229-1.000.000.027	T229-1.000.000.027	4
23	Self-lubricating bush	25T40/50/35	25T40/50/35	25T40/50/35	25T40/50/35	25T40/50/35	4
24	Wire harness	POD-ELK-000192	POD-ELK-000192	POD-ELK-000192	POD-ELK-000192	POD-ELK-000193	1
25	Electrical socket	POD-ELK-000197	POD-ELK-000197	POD-ELK-000197	POD-ELK-000197	POD-ELK-000197	1

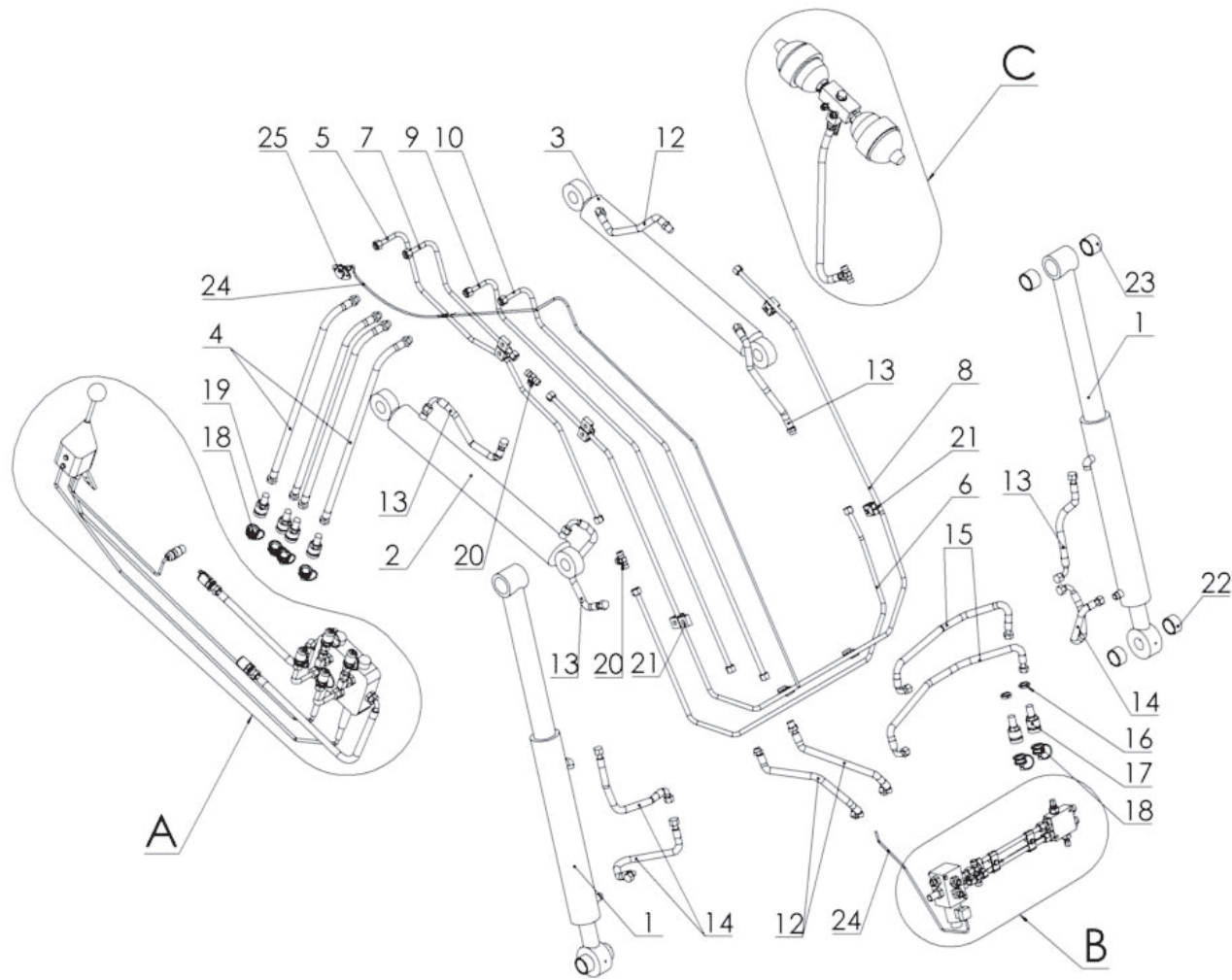


Fig. 9 Two-section hydraulic system with shock absorber

**Table 9 Two-section hydraulic system with shock absorber**

Item	Name of assembly or part	Part number or index					Qty
		Loader type					
		T229-1 lifting capacity 1300 kg	T229-1 lifting capacity 1600 kg	T229-K lifting capacity 1300 kg	T229-K lifting capacity 1600 kg	T229-D lifting capacity 1600 kg	
1	Actuator	24SCJ70/36/400	24SCJ80/45/400	24SCJ70/36/400	24SCJ80/45/400	24SCJ80/45/400	2
2	Right actuator	24SCJ70/40/500 P	24S90/45/500P	24SCJ70/40/500 P	24S90/45/500P	24SCJ90/45/500 S-40	1
3	Left actuator	24SCJ70/40/500	24S90/45/500L	24SCJ70/40/500	24S90/45/500L	24SCJ90/45/500	1
4	Hydraulic line	24PAB10/2-900 13/10	24PAB10/2-900 13/10	24PAB10/2-900 13/10	24PAB10/2-900 13/10	24PAB10/2-900 13/10	4
5	Hydraulic line, steel	24PST229- 1.000.044.001	24PST229- 1.000.044.001	24PST229- 1.000.044.001	24PST229- 1.000.044.001	24PST229- D.000.044.001	1
6	Hydraulic line, steel	POD-HPR-000118	POD-HPR-000118	POD-HPR-000121	POD-HPR-000121	POD-HPR-000117	1
7	Hydraulic line, steel	24PST229- 1.000.045.001	24PST229- 1.000.045.001	24PST229- 1.000.045.001	24PST229- 1.000.045.001	24PST229- D.000.045.001	1
8	Hydraulic line, steel	POD-HPR-000119	POD-HPR-000119	POD-HPR-000120	POD-HPR-000120	POD-HPR-000116	1
9	Hydraulic line, steel	24PST229- 1.000.046.001	24PST229- 1.000.046.001	24PST229- 1.000.046.001	24PST229- 1.000.046.001	24PST229- D.000.046.001.1	1
10	Hydraulic line, steel	24PST229- 1.000.047.001	24PST229- 1.000.047.001	24PST229- 1.000.047.001	24PST229- 1.000.047.001	24PST229- D.000.047.001.1	1
11	Hydraulic line, steel	24PST229- 1.000.048.001	24PST229- 1.000.048.001	24PST229- 1.000.048.001	24PST229- 1.000.048.001	24PST229- D.000.048.001.1	1
12	Hydraulic line	24PA90B10/2-400	24PA90B10/2-400	24PA90B10/2-400	24PA90B10/2-400	24PA90B10/2-400	3
13	Hydraulic line	POD-HPR-000110	POD-HPR-000110	POD-HPR-000110	POD-HPR-000110	POD-HPR-000110	4
14	Hydraulic line	24PA90A10/2-550	24PA90A10/2-550	24PA90A10/2-550	24PA90A10/2-550	24PA90A10/2-550	3
15	Hydraulic line	24PA90A10/2-750	24PA90A10/2-750	24PA90A10/2-750	24PA90A10/2-750	24PA90A10/2-750	2
16	Locknut M18x1.5	24P18/1.5	24P18/1.5	24P18/1.5	24P18/1.5	24P18/1.5	2
17	Euro valve-socket, M18x1.5 long	POD-HZW-000039	POD-HZW-000039	POD-HZW-000039	POD-HZW-000039	POD-HZW-000039	2



18	Socket valve cap	24ZGNE13	24ZGNE13	24ZGNE13	24ZGNE13	24ZGNE13	6
19	Euro valve-socket, M18x1.5	24ZG M18/1.5	24ZG M18/1.5	24ZG M18/1.5	24ZG M18/1.5	24ZG M18/1.5	4
20	Tee-connector	24KT18/18/18	24KT18/18/18	24KT18/18/18	24KT18/18/18	24KT18/18/18	2
21	HBK fixture	POD-HPZ-000010-1	POD-HPZ-000010-1	POD-HPZ-000010-1	POD-HPZ-000010-1	POD-HPZ-000010-1	13
22	Distance bush	T229-1.000.000.027	T229-1.000.000.027	T229-1.000.000.027	T229-1.000.000.027	T229-1.000.000.027	4
23	Self-lubricating bush	25T40/50/35	25T40/50/35	25T40/50/35	25T40/50/35	25T40/50/35	4
24	Wire harness	POD-ELK-000192	POD-ELK-000192	POD-ELK-000192	POD-ELK-000192	POD-ELK-000193	1
25	Electrical socket	POD-ELK-000197	POD-ELK-000197	POD-ELK-000197	POD-ELK-000197	POD-ELK-000197	1

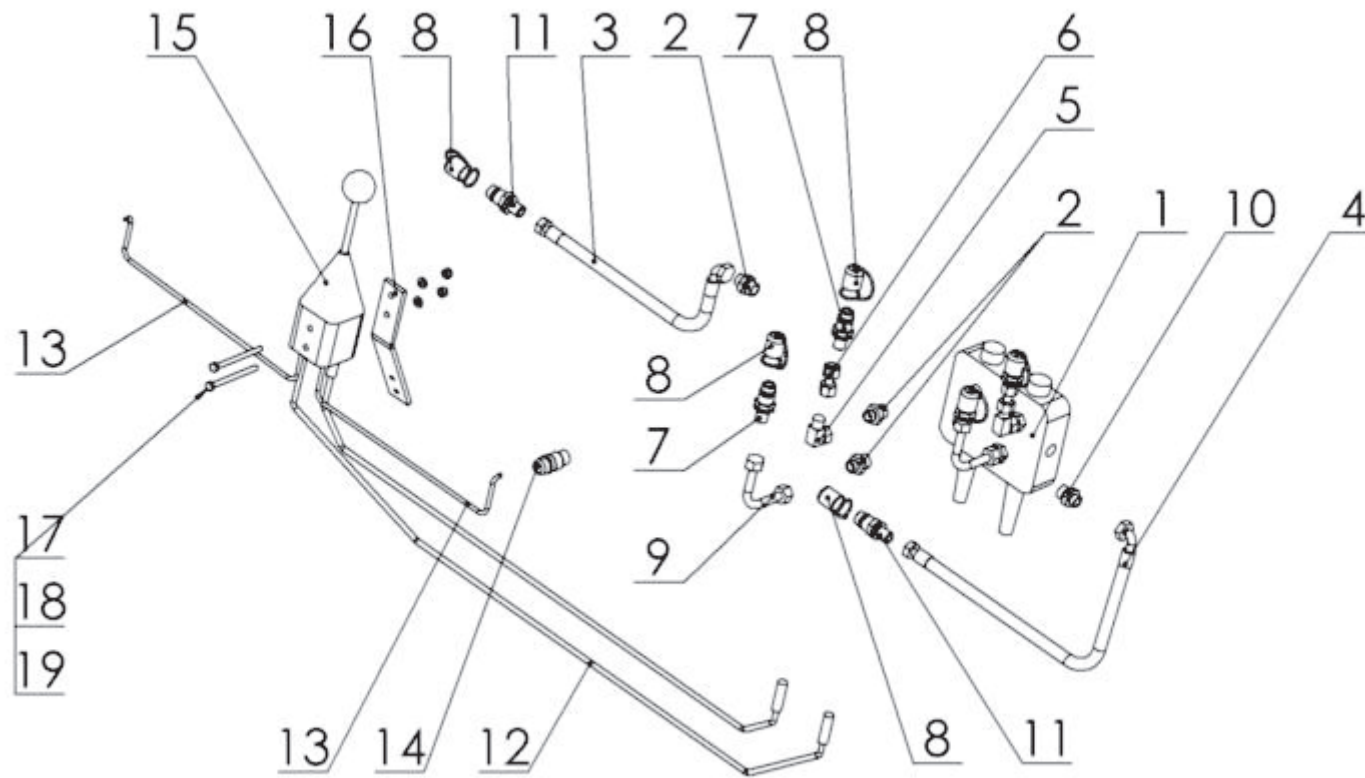


Fig. 10 Control system for loader (two-section; assembly "A")

**Table no. 10. Control system for loader (two-section; assembly “A”)**

Item	Name of assembly or part	Part number or index	Qty
1	Hydraulic separator	24RMD2 70/320	1
2	Straight coupling 1/2”/M18x1.5	24KP1/2 18	5
3	Power cord	24PAA90/241/10 L-3000	1
4	Oil return pipe	24PA90A/233/13-3000	1
5	Adjustable elbow, M18x1.5	24KPKN18X1.5	2
6	Straight coupling, female M18x1.5	24KZP18/18	2
7	Euro valve-plug, M18x1.5	24ZWE13-M18X1.5	4
8	Plug valve protection	24ZWNE13	6
9	Elbow union piece, female M18x1.5	POD-HKR-000020	2
10	Straight coupling 1/2”/M22x1.5	24K1/2 22	1
11	Euro valve-plug, M22x1.5	24ZWE13	2
12	Control cable (ball tip)	POD-HPZ-000105	2
12	Control cable (fork tip)	24LS2M	2
13	Wire harness	POD-ELK-000003-1	1
14	Electrical plug	POD-ELK-000198	1
15	Joystick (ball tip)	POD-HPZ-000104	1
15	Joystick (fork tip)	24JOY	1
16	Joystick bracket	T229-1 000.000.101.1	1
17	Bolt, M8x100	23S8/100	2
18	Plain washer, 8.4	23P8OOC	2
19	Self-locking nut, M8	23NS8OC	2

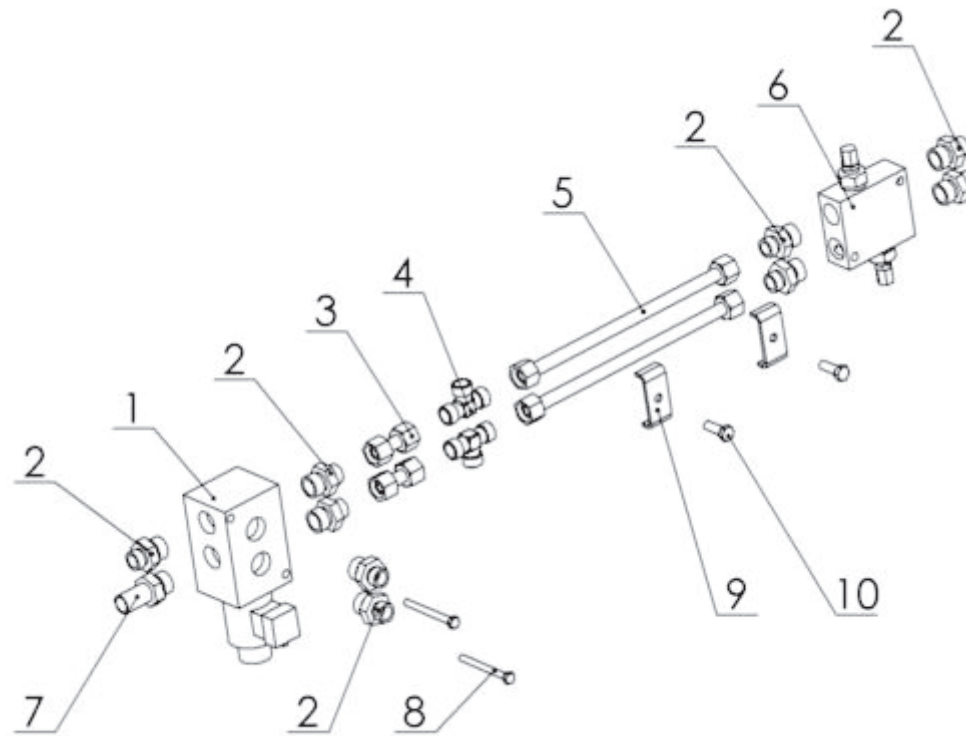


Fig. 11. Solenoid valve unit ("B" assembly)

**Table no. 11. Solenoid valve unit ("B" assembly)**

Item	Name of assembly or part	Part number or index			Qty
		Loader type			
		T229-1	T229-K	T229-D	
1	Divider	24DE	24DE	24DE	1
2	Straight coupling 1/2"/M18x1.5	24KP1/2 18	24KP1/2 18	24KP1/2 18	9
3	Straight coupling, female M18x1.5	24KZP18/18	24KZP18/18	24KZP18/18	2
4	Tee-connector 3XM18x1.5	24KT18/18/18	24KT18/18/18	24KT18/18/18	2
5	Hydraulic line, steel	24PST229-1.000.049.001.2	24PST229-K.000.049.001.2	24PST229-K.000.049.001.2	2
6	Overflow valve	24ZP	24ZP	24ZP	1
7	Partition screw 1/2"	24SG1/2-M18X1.5	24SG1/2-M18X1.5	24SG1/2-M18X1.5	1
8	Bolt, M6x65	POD-ELZ-000447	POD-ELZ-000447	POD-ELZ-000447	2
9	Clamp II	T229-1 000.000.025.1	T229-1 000.000.025.1	T229-1 000.000.025.1	2
10	Bolt 8x30	23S8/30OC 8.8	23S8/30OC 8.8	23S8/30OC 8.8	2

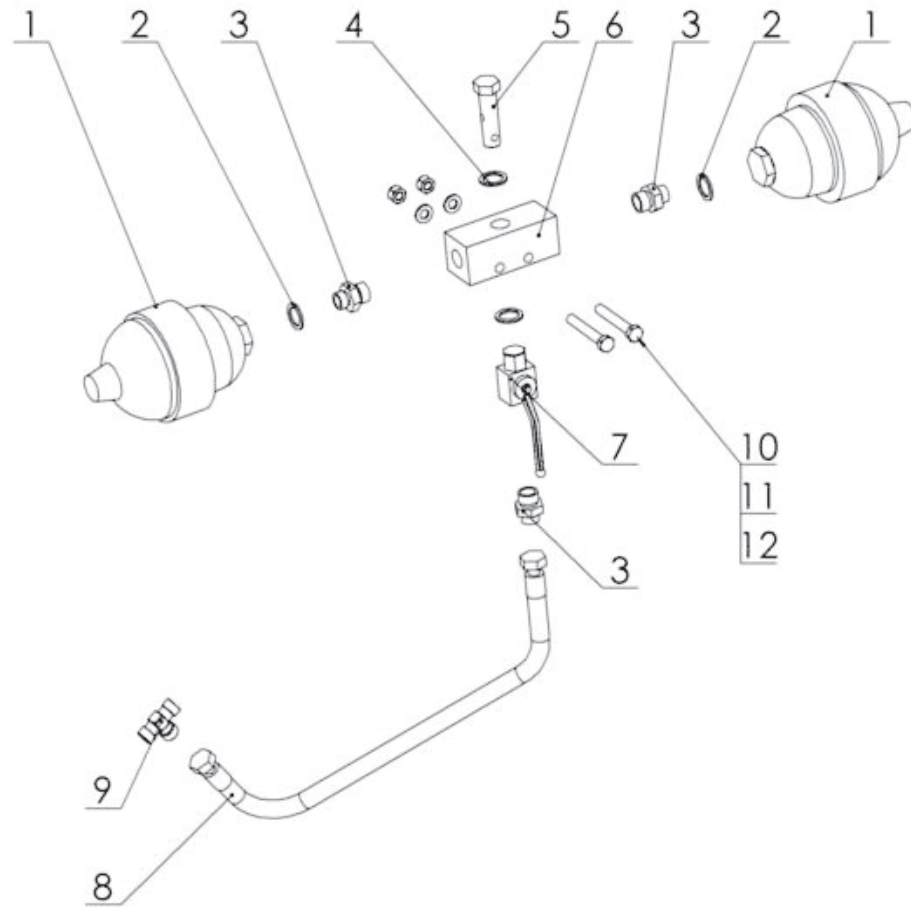


Fig. 12 Hydraulic accumulator unit ("C" assembly)

**Table no. 12. Hydraulic accumulator unit ("C" assembly).**

Item	Name of assembly or part	Part number or index	Qty
1	Hydraulic accumulator	H500R/LT	2
2	O-ring, PPM 18	24UPPM18	2
3	Straight coupling 1/2"/M18x1.5	24KP1/2 18	3
4	Copper washer 1/2"	21x18x1.5	2
5	Eye bolt 1/2"	G1/2" L=60	1
6	Valve block	kw.45+SC01	1
7	Ball valve	GE2-1/2"	1
8	Hydraulic hose	24PA90A10/2-550	1
9	Tee-connector 3XM18x1.5	24KT18/18/18	1
10	Bolt, M10x70	23S10/70	2
11	Plain washer, 10.5	23P10 82005	2
12	Self-locking nut, M10	23NS10OC	2

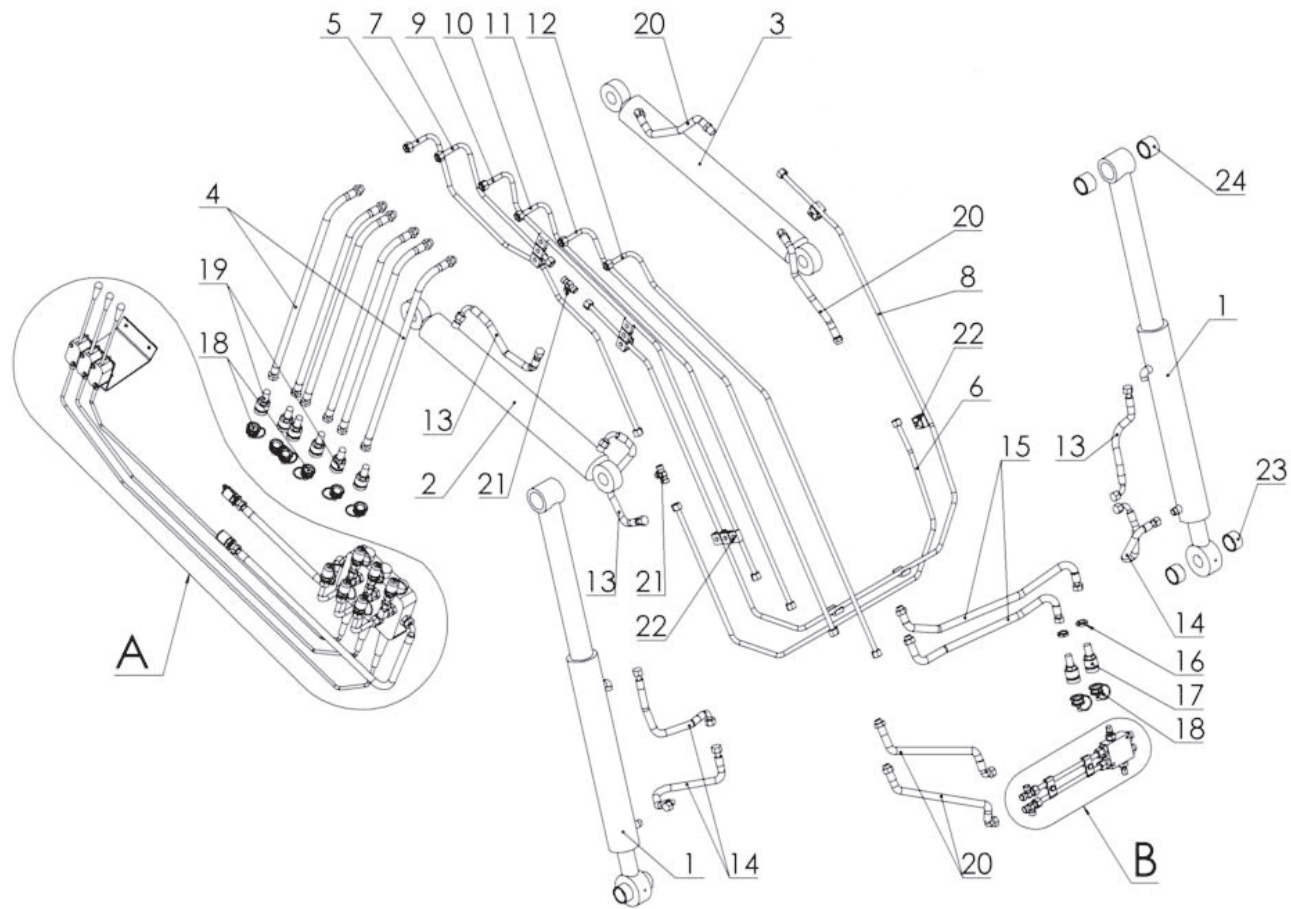


Fig. 13 Three-section hydraulic system.



**Table no. 13. Three-section hydraulic system.**

Item	Name of assembly or part	Part number or index					Qty
		Loader type					
		T229-1 lifting capacity 1300 kg	T229-1 lifting capacity 1600 kg	T229-K lifting capacity 1300 kg	T229-K lifting capacity 1600 kg	T229-D lifting capacity 1600 kg	
1	Actuator	24SCJ70/36/400	24SCJ80/45/400	24SCJ70/36/400	24SCJ80/45/400	24SCJ80/45/400	2
2	Right actuator	24SCJ70/40/500 P	24S90/45/500P	24SCJ70/40/500 P	24S90/45/500P	24SCJ90/45/500 S-40	1
3	Left actuator	24SCJ70/40/500	24S90/45/500L	24SCJ70/40/500	24S90/45/500L	24SCJ90/45/500	1
4	Hydraulic line	24PAB10/2-900 13/10	24PAB10/2-900 13/10	24PAB10/2-900 13/10	24PAB10/2-900 13/10	24PAB10/2-900 13/10	6
5	Hydraulic line, steel	24PST229- 1.000.044.001	24PST229- 1.000.044.001	24PST229- 1.000.044.001	24PST229- 1.000.044.001	24PST229- D.000.044.001	1
6	Hydraulic line, steel	POD-HPR-000118	POD-HPR-000118	POD-HPR-000121	POD-HPR-000121	POD-HPR-000117	1
7	Hydraulic line, steel	24PST229- 1.000.045.001	24PST229- 1.000.045.001	24PST229- 1.000.045.001	24PST229- 1.000.045.001	24PST229- D.000.045.001	1
8	Hydraulic line, steel	POD-HPR-000119	POD-HPR-000119	POD-HPR-000120	POD-HPR-000120	POD-HPR-000116	1
9	Hydraulic line, steel	24PST229- 1.000.046.001	24PST229- 1.000.046.001	24PST229- 1.000.046.001	24PST229- 1.000.046.001	24PST229- D.000.046.001.1	1
10	Hydraulic line, steel	24PST229- 1.000.047.001	24PST229- 1.000.047.001	24PST229- 1.000.047.001	24PST229- 1.000.047.001	24PST229- D.000.047.001.1	1
11	Hydraulic line, steel	24PST229- 1.000.048.001	24PST229- 1.000.048.001	24PST229- 1.000.048.001	24PST229- 1.000.048.001	24PST229- D.000.048.001.1	1
12	Hydraulic line, steel	24PST229- 1.000.068.001	24PST229- 1.000.068.001	24PST229- 1.000.068.001	24PST229- 1.000.068.001	POD-HPR-000220	1
13	Hydraulic line	POD-HPR-000110	POD-HPR-000110	POD-HPR-000110	POD-HPR-000110	POD-HPR-000110	3
14	Hydraulic line	24PA90A10/2-550	24PA90A10/2-550	24PA90A10/2-550	24PA90A10/2-550	24PA90A10/2-550	3
15	Hydraulic line	24PA90B10/2-750	24PA90B10/2-750	24PA90B10/2-750	24PA90B10/2-750	24PA90B10/2-750	2

16	Locknut M18x1.5	24P18/1.5	24P18/1.5	24P18/1.5	24P18/1.5	24P18/1.5	2
17	Euro valve-socket, M18x1.5 long	POD-HZW-000039	POD-HZW-000039	POD-HZW-000039	POD-HZW-000039	POD-HZW-000039	2
18	Socket valve cap	24ZGNE13	24ZGNE13	24ZGNE13	24ZGNE13	24ZGNE13	8
19	Euro valve-socket, M18x1.5	24ZG M18/1.5	24ZG M18/1.5	24ZG M18/1.5	24ZG M18/1.5	24ZG M18/1.5	6
20	Hydraulic line	24PA90B10/2-400	24PA90B10/2-400	24PA90B10/2-400	24PA90B10/2-400	24PA90B10/2-400	4
21	Tee-connector	24KT18/18/18	24KT18/18/18	24KT18/18/18	24KT18/18/18	24KT18/18/18	2
22	HBK fxture	POD-HPZ-000010-1	POD-HPZ-000010-1	POD-HPZ-000010-1	POD-HPZ-000010-1	POD-HPZ-000010-1	13
23	Distance bush	T229-1.000.000.027	T229-1.000.000.027	T229-1.000.000.027	T229-1.000.000.027	T229-1.000.000.027	4
24	Self-lubricating bush	25T40/50/35	25T40/50/35	25T40/50/35	25T40/50/35	25T40/50/35	4

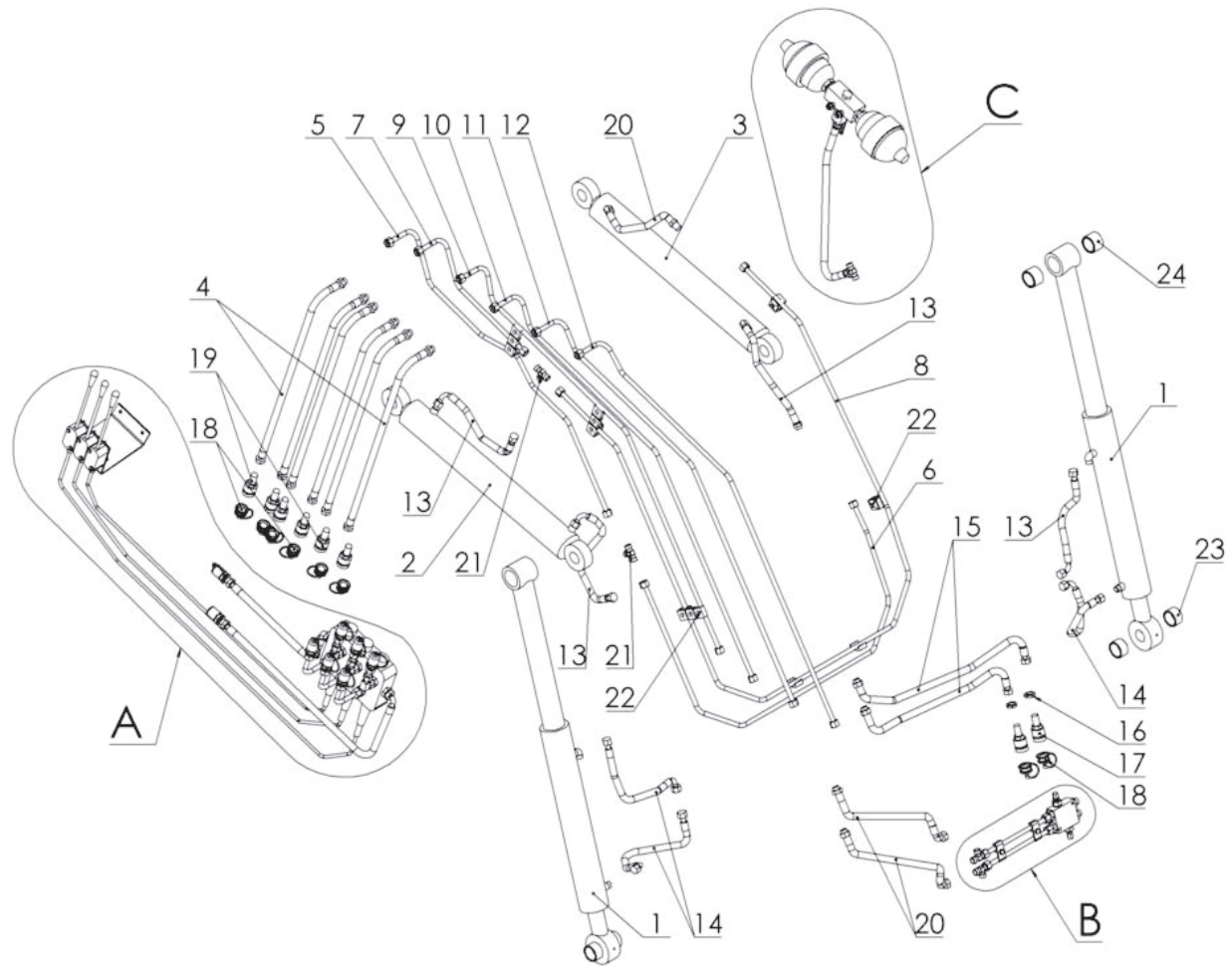


Fig. 14 Three-section hydraulic system with shock absorber.

**Table no. 14. Three-section hydraulic system with shock absorber.**

Item	Name of assembly or part	Part number or index					Qty
		Loader type					
		T229-1 lifting capacity 1300 kg	T229-1 lifting capacity 1600 kg	T229-K lifting capacity 1300 kg	T229-K lifting capacity 1600 kg	T229-D lifting capacity 1600 kg	
1	Actuator	24SCJ70/36/400	24SCJ80/45/400	24SCJ70/36/400	24SCJ80/45/400	24SCJ80/45/400	2
2	Right actuator	24SCJ70/40/500 P	24S90/45/500P	24SCJ70/40/500 P	24S90/45/500P	24SCJ90/45/500 S-40	1
3	Left actuator	24SCJ70/40/500	24S90/45/500L	24SCJ70/40/500	24S90/45/500L	24SCJ90/45/500	1
4	Hydraulic line	24PAB10/2-900 13/10	24PAB10/2-900 13/10	24PAB10/2-900 13/10	24PAB10/2-900 13/10	24PAB10/2-900 13/10	6
5	Hydraulic line, steel	24PST229- 1.000.044.001	24PST229- 1.000.044.001	24PST229- 1.000.044.001	24PST229- 1.000.044.001	24PST229- D.000.044.001	1
6	Hydraulic line, steel	POD-HPR-000118	POD-HPR-000118	POD-HPR-000121	POD-HPR-000121	POD-HPR-000117	1
7	Hydraulic line, steel	24PST229- 1.000.045.001	24PST229- 1.000.045.001	24PST229- 1.000.045.001	24PST229- 1.000.045.001	24PST229- D.000.045.001	1
8	Hydraulic line, steel	POD-HPR-000119	POD-HPR-000119	POD-HPR-000120	POD-HPR-000120	POD-HPR-000116	1
9	Hydraulic line, steel	24PST229- 1.000.046.001	24PST229- 1.000.046.001	24PST229- 1.000.046.001	24PST229- 1.000.046.001	24PST229- D.000.046.001.1	1
10	Hydraulic line, steel	24PST229- 1.000.047.001	24PST229- 1.000.047.001	24PST229- 1.000.047.001	24PST229- 1.000.047.001	24PST229- D.000.047.001.1	1
11	Hydraulic line, steel	24PST229- 1.000.048.001	24PST229- 1.000.048.001	24PST229- 1.000.048.001	24PST229- 1.000.048.001	24PST229- D.000.048.001.1	1
12	Hydraulic line, steel	24PST229- 1.000.068.001	24PST229- 1.000.068.001	24PST229- 1.000.068.001	24PST229- 1.000.068.001	POD-HPR-000220	1
13	Hydraulic line	POD-HPR-000110	POD-HPR-000110	POD-HPR-000110	POD-HPR-000110	POD-HPR-000110	4
14	Hydraulic line	24PA90A10/2-550	24PA90A10/2-550	24PA90A10/2-550	24PA90A10/2-550	24PA90A10/2-550	3

15	Hydraulic line	24PA90B10/2-750	24PA90B10/2-750	24PA90B10/2-750	24PA90B10/2-750	24PA90B10/2-750	2
16	Locknut M18x1.5	24P18/1.5	24P18/1.5	24P18/1.5	24P18/1.5	24P18/1.5	2
17	Euro valve-socket, M18x1.5 long	POD-HZW-000039	POD-HZW-000039	POD-HZW-000039	POD-HZW-000039	POD-HZW-000039	2
18	Socket valve cap	24ZGNE13	24ZGNE13	24ZGNE13	24ZGNE13	24ZGNE13	8
19	Euro valve-socket, M18x1.5	24ZG M18/1.5	24ZG M18/1.5	24ZG M18/1.5	24ZG M18/1.5	24ZG M18/1.5	6
20	Hydraulic line	24PA90B10/2-400	24PA90B10/2-400	24PA90B10/2-400	24PA90B10/2-400	24PA90B10/2-400	3
21	Tee-connector	24KT18/18/18	24KT18/18/18	24KT18/18/18	24KT18/18/18	24KT18/18/18	2
22	HBK fixture	POD-HPZ-000010-1	POD-HPZ-000010-1	POD-HPZ-000010-1	POD-HPZ-000010-1	POD-HPZ-000010-1	13
23	Distance bush	T229-1.000.000.027	T229-1.000.000.027	T229-1.000.000.027	T229-1.000.000.027	T229-1.000.000.027	4
24	Self-lubricating bush	25T40/50/35	25T40/50/35	25T40/50/35	25T40/50/35	25T40/50/35	4

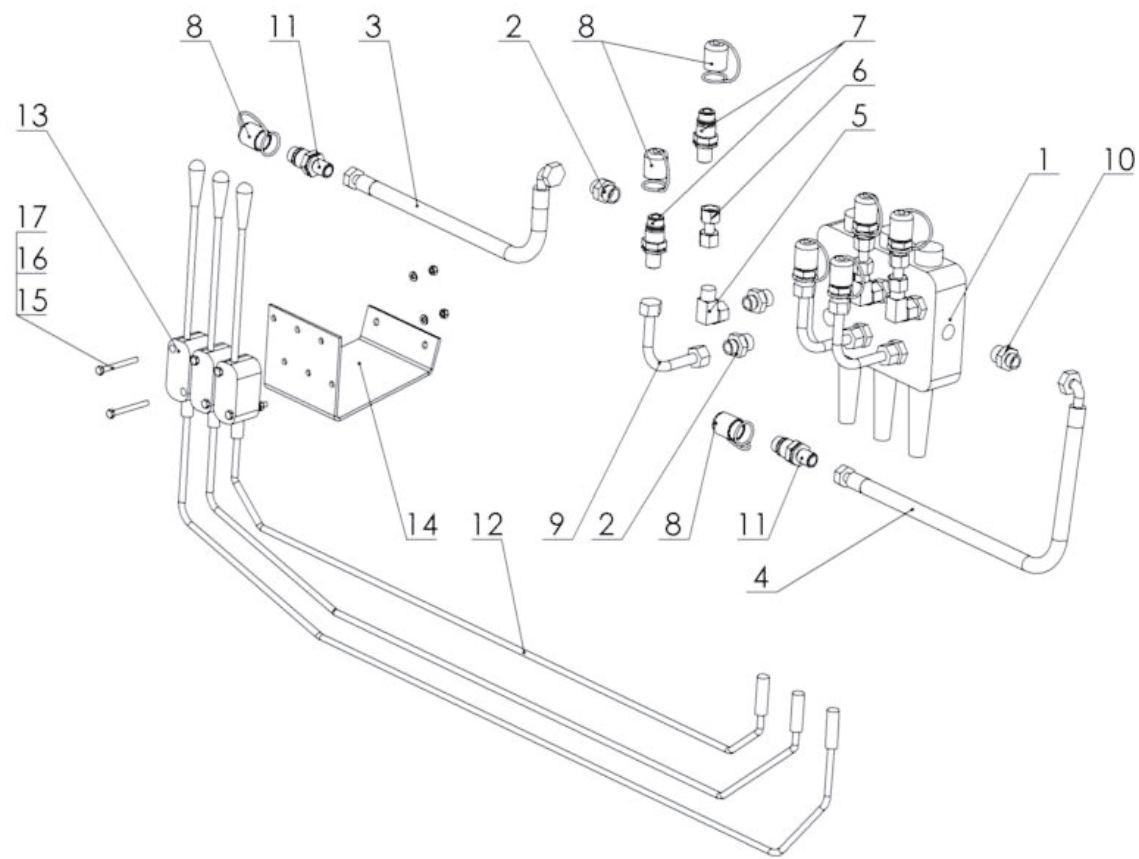


Fig. 15 Control system for loader (three-section; assembly "A")

**Table no. 15. Control system for loader (three-section; assembly “A”)**

Item	Name of assembly or part	Part number or index	Qty
1	Hydraulic separator	24RMD3 CABLE	1
2	Straight coupling 1/2”/M18x1.5	24KP1/2 18	7
3	Power cord	24PAA90/241/10 L-3000	1
4	Oil return pipe	24PA90A/233/13-3000	1
5	Adjustable elbow, M18x1.5	24KPKN18X1.5	3
6	Straight coupling, female M18x1.5	24KZP18/18	3
7	Euro valve-plug, M18x1.5	24ZWE13-M18X1.5	6
8	Plug valve protection	24ZWNE13	8
9	Elbow union piece, female M18x1.5	POD-HKR-000020	3
10	Straight coupling 1/2”/M22x1.5	24K1/2 22	1
11	Euro valve-plug, M22x1.5	24ZWE13	2
12	Control cable (fork tip)	24LS2M	3
13	Cable control lever	24DZS	3
14	Lever bracket	T229-1 000.000.201.1	1
15	Bolt, M6x60	23S6/60OC 8.8	6
16	Plain washer, 6.4	23P6OOC	6
17	Self-locking nut, M6	23NS6OC	6

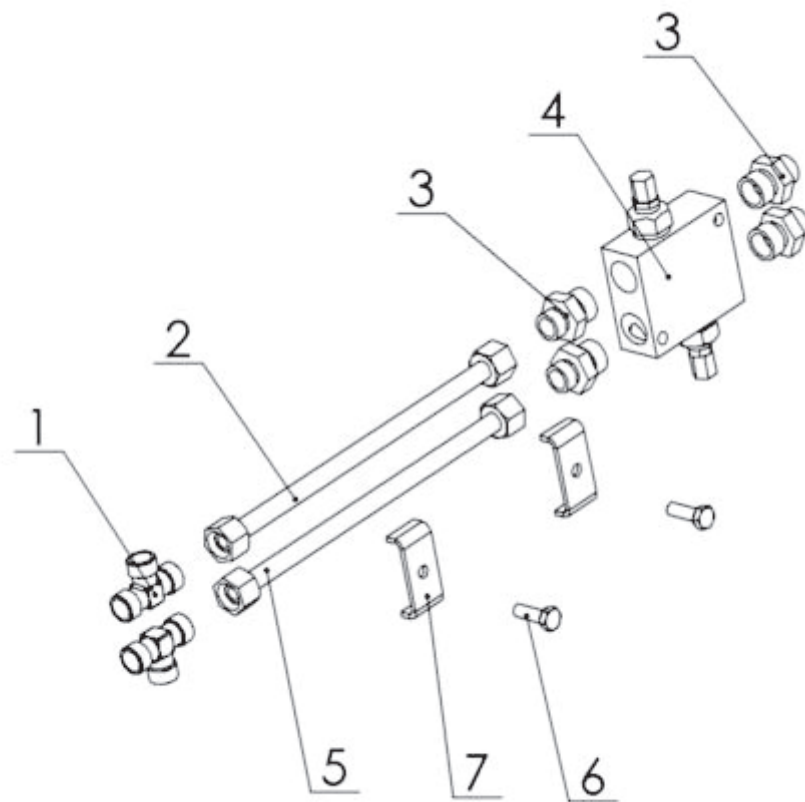


Fig. 16 Overflow valve unit (assembly "B")



**Table no. 16. Solenoid valve unit ("B" assembly)**

Item	Name of assembly or part	Part number or index			Qty
		Loader type			
		T229-1	T229-K	T229-D	
1	Tee-connector 3XM18x1.5	24KT18/18/18	24KT18/18/18	24KT18/18/18	2
2	Hydraulic line, steel	24PST229-1.000.049.001.2	24PST229-K.000.049.001.2	24PST229-K.000.049.001.2	1
3	Straight coupling 1/2"/M18x1.5	24KP1/2 18	24KP1/2 18	24KP1/2 18	4
4	Overflow valve	24ZP	24ZP	24ZP	1
5	Hydraulic line, steel	24PST229-1.000.049.001.3	24PST229-K.000.049.001.3	24PST229-K.000.049.001.3	4
6	Bolt 8x30	23S8/30OC 8.8	23S8/30OC 8.8	23S8/30OC 8.8	2
7	Clamp II	T229-1 000.000.025.1	T229-1 000.000.025.1	T229-1 000.000.025.1	2

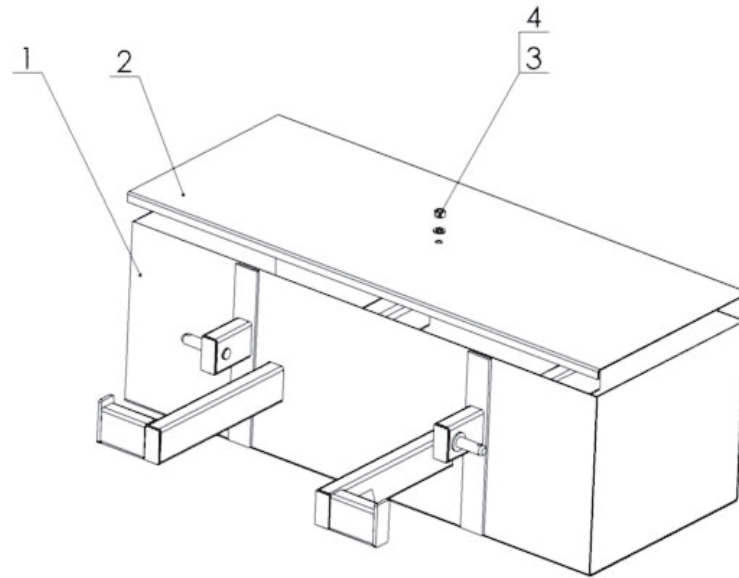


Fig. 17. Ballast box

**Table no. 17. Ballast box**

Item	Name of assembly or part	Part number or index		Qty
		Load capacity 650 kg	Load capacity 800 kg	
1	Welded container	OL.BL 650 01.00.00	OL.BL 800 01.00.00	1
2	Cover	OL.BL 650 00.00.02	OL.BL 800 00.00.02	1
3	Plain washer, 17	23P16OOC	23P16OOC	1
4	Self-locking nut, M16	23NS16OC	23NS16OC	1

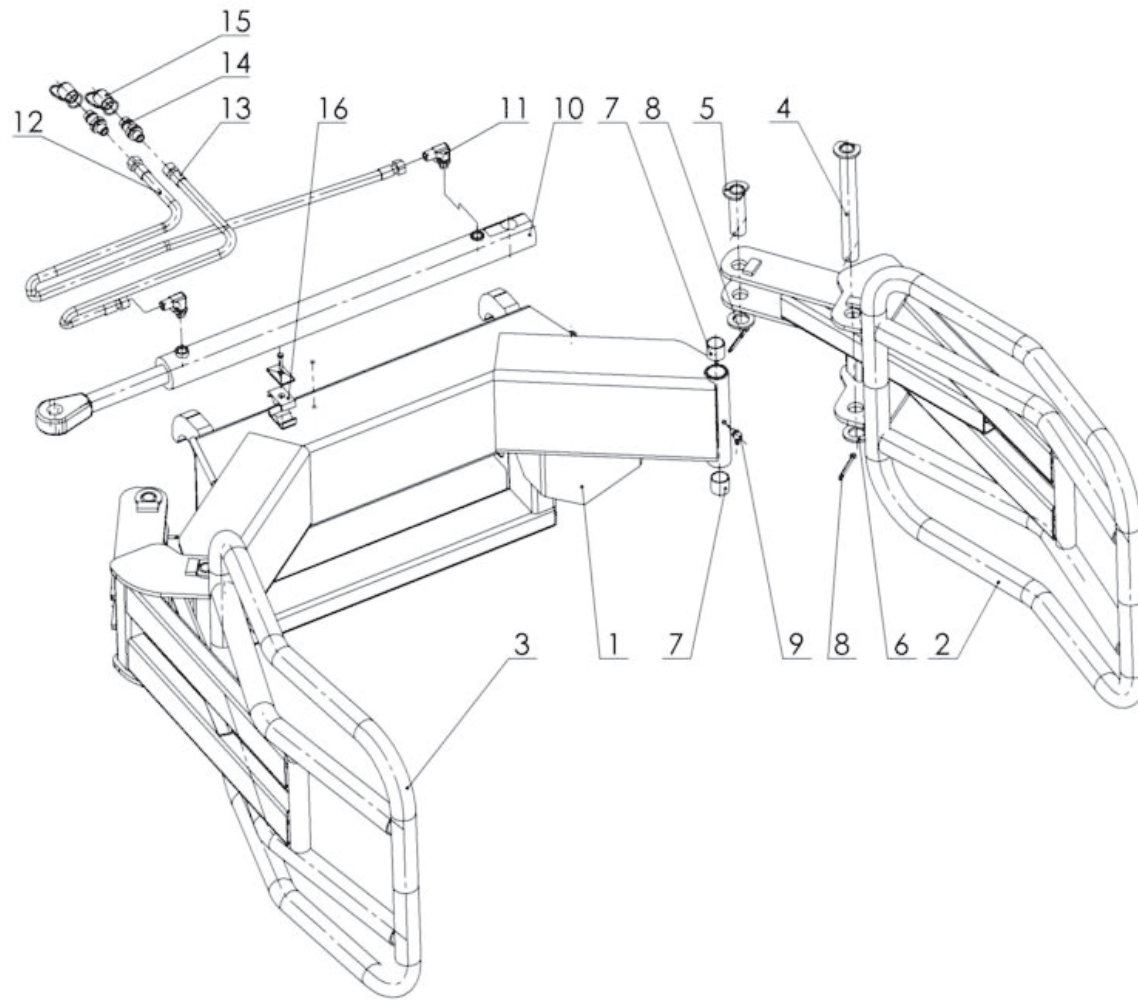


Fig. 18. Bale grip

**Table no. 18. Bale grip.**

Item	Name of assembly or part	Part number or index		Qty
		Version SMS	Version EURO	
1	Welded frame	OL.CH 01.00.00.4	OL.CH 01.00.00.3E	1
2	Bale grip clamp set L	OL.CH 02.00.00.2L	OL.CH 02.00.00.2L	1
3	Bale grip clamp set P	OL.CH 02.00.00.2P	OL.CH 02.00.00.2P	1
4	Pin I	OL.CH 00.03.00	OL.CH 00.03.00	2
5	Pin II	OL.CH 00.04.00	OL.CH 00.04.00	2
6	Plain washer, 30	POD-ELZ-000507	POD-ELZ-000507	13
7	Self-lubricating bush	POD-LOZ-000021-1	POD-LOZ-000021-1	4
8	Cotter pin, 6.3x63	23Z6/63	23Z6/63	4
9	Grease nipple, M10x1.0, 45 deg. angle	23M10KAT45	23M10KAT45	2
10	Hydraulic actuator	24SCJ2F-36-520	24SCJ2F-36-520	1
11	Elbow coupling	24KK16/18	24KK16/18	2
12	Hydraulic hose	24PAA/111/10 L2600	24PAA/111/10 L-3200	1
13	Hydraulic hose	24PAA/111/10 L-2000	24PAA/111/10 L2600	1
14	Euro valve-plug, M18x1.5	24ZWE13-M18X1.5	24ZWE13-M18X1.5	2
15	Plug valve cap	24ZWNE13	24ZWNE13	2
16	HBK fxture	POD-HPZ-000005-1	POD-HPZ-000005-1	1

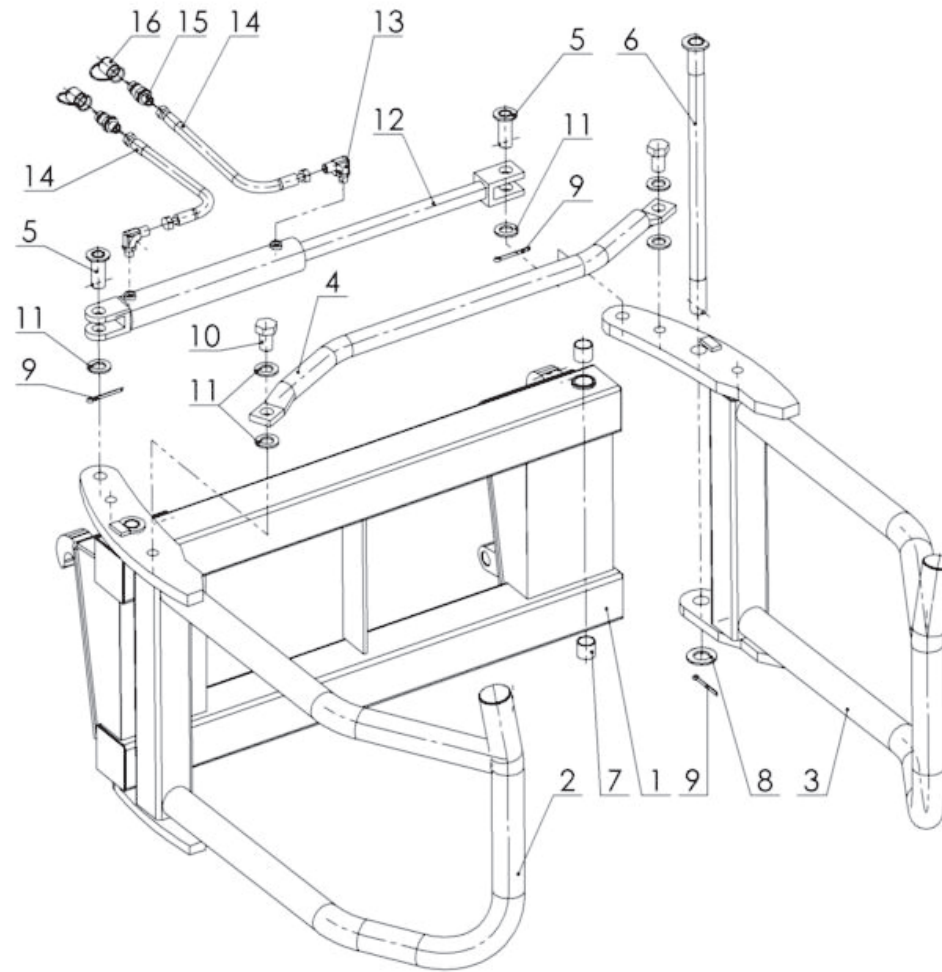


Fig. 19. Bale grip (version 2)

**Table no. 19. Bale grip. (version 2)**

Item	Name of assembly or part	Part number or index		Qty
		Version SMS	Version EURO	
1	Grip frame	OL.CH 2 01.00.00	OL.CH 2 01.00.00E	1
2	Grip arm, right	OL.CH 2 02.00.00.1P	OL.CH 2 02.00.00.1P	1
3	Grip arm, left	OL.CH 2 02.00.00.1L	OL.CH 2 02.00.00.1L	1
4	Spacer	OL.CH 2 00.00.03	OL.CH 2 00.00.03	1
5	Pin I set	OL.CH 2 00.04.00	OL.CH 2 00.04.00	2
6	Pin II set	OL.CH 2 00.05.00	OL.CH 2 00.05.00	2
7	Self-lubricating bush	POD-LOZ-000021-1	POD-LOZ-000021-1	4
8	Plain washer, 31	23P30OOC	23P30OOC	2
9	Cotter pin, 6.3x63	23Z6/63	23Z6/63	4
10	Bolt 24x50	POD-ELZ-000445	POD-ELZ-000445	2
11	Plain washer, 25	23P24OC	23P24OC	6
12	Hydraulic actuator	24SCJ1.63/36*250	24SCJ1.63/36*250	1
13	Straight coupling	POD-HKR-000040	POD-HKR-000040	2
14	Hydraulic hose	24PAA90/111/10 L-1500	24PA90A10-2000 10/13	2
15	Euro valve-plug, M18x1.5	24ZWE13-M18X1.5	24ZWE13-M18X1.5	2
16	Plug valve cap	24ZWNE13	24ZWNE13	2

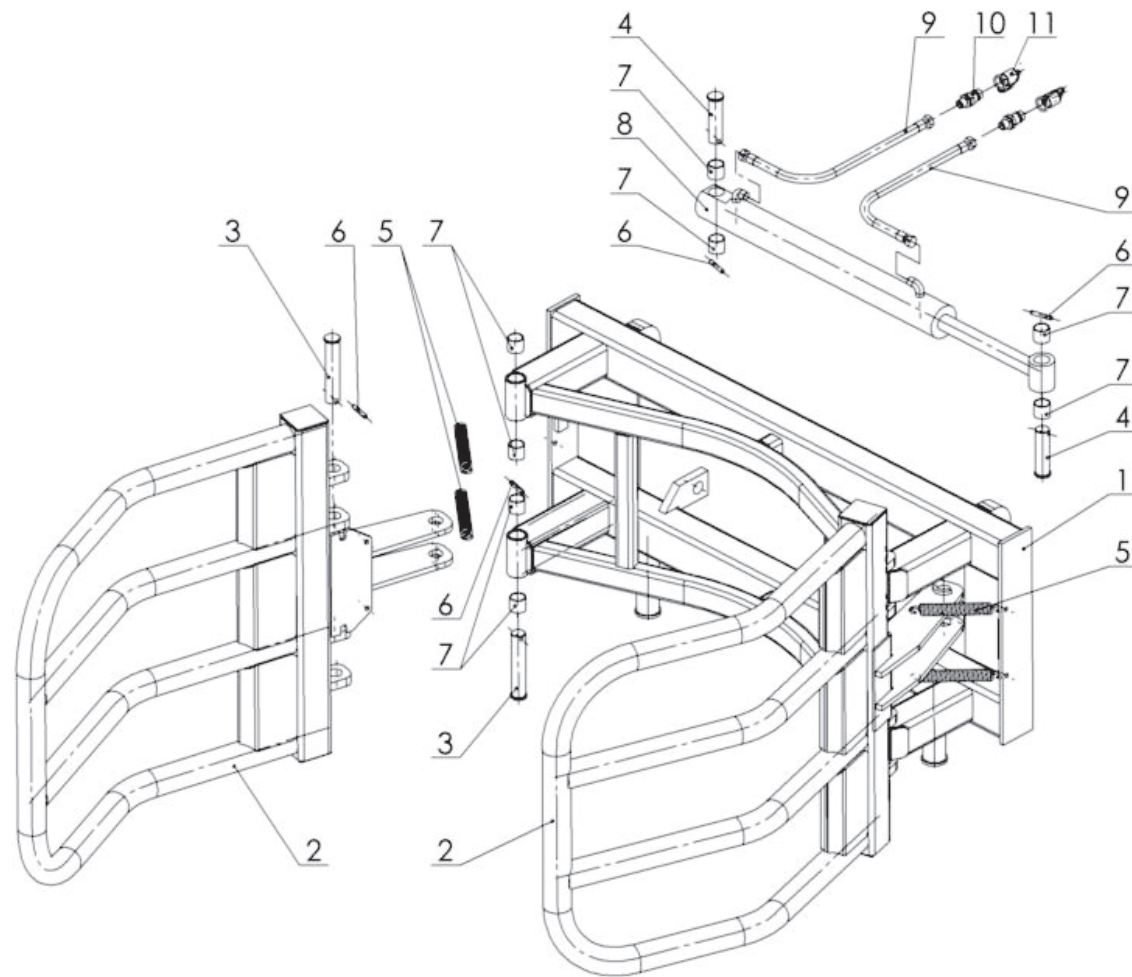


Fig. 20. Bale grip (version 3)

**Table no. 20. Bale grip. (version 3)**

Item	Name of assembly or part	Part number or index	Qty
1	Grip frame	OL.CH 3 01.00.00E	1
2	Clamp set	OL.CH 3 02.00.00	2
3	Clamp pin	OL.CH 3 00.00.03	2
4	Actuator pin	OL.CH 3 00.00.04	2
5	Spring	POD-SPR-000005	4
6	Spring pin	23K8/50	6
7	Self-lubricating bush	POD-LOZ-000112	12
8	Hydraulic actuator	POD-HSL-000028	1
9	Hydraulic hose	24PAA/111/10 L-2000	2
10	Euro valve-plug, M18x1.5	24ZWE13-M18X1.5	2
11	Plug valve cap	24ZWNE13	2



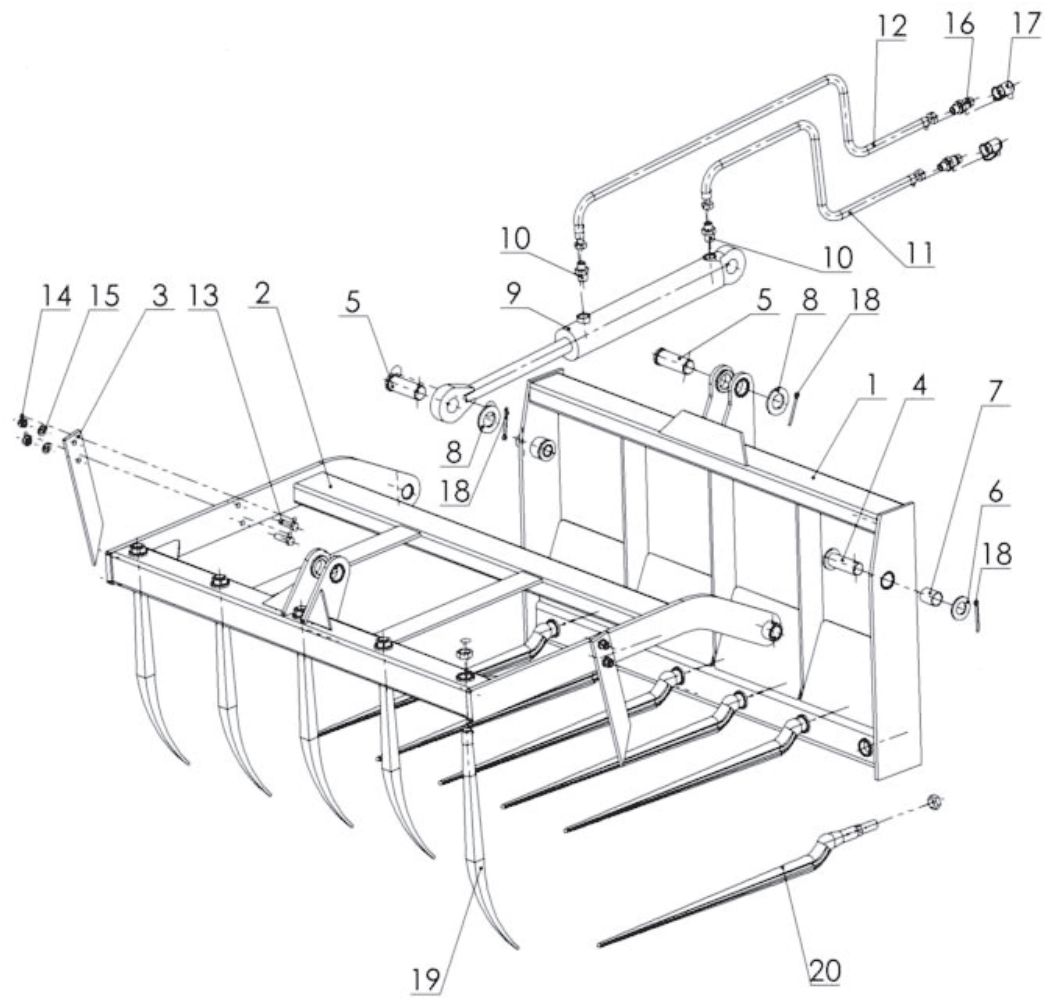


Fig. 21. Silage grip (version with 1 actuator)

**Table no. 21. Silage grip (version with 1 actuator)**

Item	Name of part or assembly	Part number or index						Qty
		Grip type						
		OL.Kr 1.2	OL.Kr 1.2 E	OL.Kr 1.5	OL.Kr 1.5 E	OL.Kr 1.8	OL.Kr 1.8 E	
1	Welded frame	OL.KR 1.2 01.00.00	OL.KR 1.2 01.00.00 E	OL.KR 1.5 01.00.00	OL.KR 1.5 01.00.00 E	OL.KR 1.8 01.00.00	OL.KR 1.8 01.00.00E	1
2	Movable frame	OL.KR 1.2 02.00.00	OL.KR 1.2 02.00.00	OL.KR 1.5 02.00.00	OL.KR 1.5 02.00.00	OL.KR 1.8 02.00.00	OL.KR 1.8 02.00.00	1
3	Side finger	OL.KR 00.00.03	OL.KR 00.00.03	OL.KR 00.00.03	OL.KR 00.00.03	OL.KR 00.00.03	OL.KR 00.00.03	2
4	Frame pin set	OL.KR 00.04.00	OL.KR 00.04.00	OL.KR 00.04.00	OL.KR 00.04.00	OL.KR 00.04.00	OL.KR 00.04.00	2
5	Actuator pin	OL.KR 00.00.05	OL.KR 00.00.05	OL.KR 00.00.05	OL.KR 00.00.05	OL.KR 00.00.05	OL.KR 00.00.05	2
6	Plain washer, 31	23P30OOC	23P30OOC	23P30OOC	23P30OOC	23P30OOC	23P30OOC	2
7	Self-lubricating bush	POD-LOZ-000115	POD-LOZ-000115	POD-LOZ-000115	POD-LOZ-000115	POD-LOZ-000115	POD-LOZ-000115	2
8	Plain washer, 36	23P36OOC	23P36OOC	23P36OOC	23P36OOC	23P36OOC	23P36OOC	2
9	Hydraulic actuator	24SCJ2F63/36/320Z	24SCJ2F63/36/320Z	24SCJ2F63/36/320Z	24SCJ2F63/36/320Z	24SCJ2F63/36/320Z	24SCJ2F63/36/320Z	1
10	Straight coupling	24KP22/18	24KP22/18	24KP22/18	24KP22/18	24KP22/18	24KP22/18	2
11	Flexible hydraulic line	24PAA90/111/10 L-1500	24PA90A10-2000 10/13	24PAA90/111/10 L-1500	24PA90A10-2000 10/13	24PAA90/111/10 L-1500	24PA90A10-2000 10/13	1
12	Flexible hydraulic line	24PA90A10-2000 10/13	24PAA90-10-2500	24PA90A10-2000 10/13	24PAA90-10-2500	24PA90A10-2000 10/13	24PAA90-10-2500	1
13	Bolt, M12x45	23S12/45OC	23S12/45OC	23S12/45OC	23S12/45OC	23S12/45OC	23S12/45OC	4
14	Self-locking nut M12	23NS12OC	23NS12OC	23NS12OC	23NS12OC	23NS12OC	23NS12OC	4
15	Plain washer, 13	23P12OC	23P12OC	23P12OC	23P12OC	23P12OC	23P12OC	4
16	Euro valve-plug	24ZWE13-M18X1.5	24ZWE13-M18X1.5	24ZWE13-M18X1.5	24ZWE13-M18X1.5	24ZWE13-M18X1.5	24ZWE13-M18X1.5	2

17	Plug valve cap	24ZWNE13	24ZWNE13	24ZWNE13	24ZWNE13	24ZWNE13	24ZWNE13	2
18	Cotter pin, 6.3x63	23Z6/63	23Z6/63	23Z6/63	23Z6/63	23Z6/63	23Z6/63	4
19	Bent finger	25PW (5 pcs.)	25PW (5 pcs.)	25PW (6 pcs.)	25PW (6 pcs.)	25PW (8 pcs)	25PW (8 pcs)	5, 6, 8
20	Straight finger	25PWW880 (6 pcs.)	25PWW880 (6 pcs.)	25PWW880 (7 pcs.)	25PWW880 (7 pcs.)	25PWW880 (9 pcs.)	25PWW880 (9 pcs.)	6, 7, 9

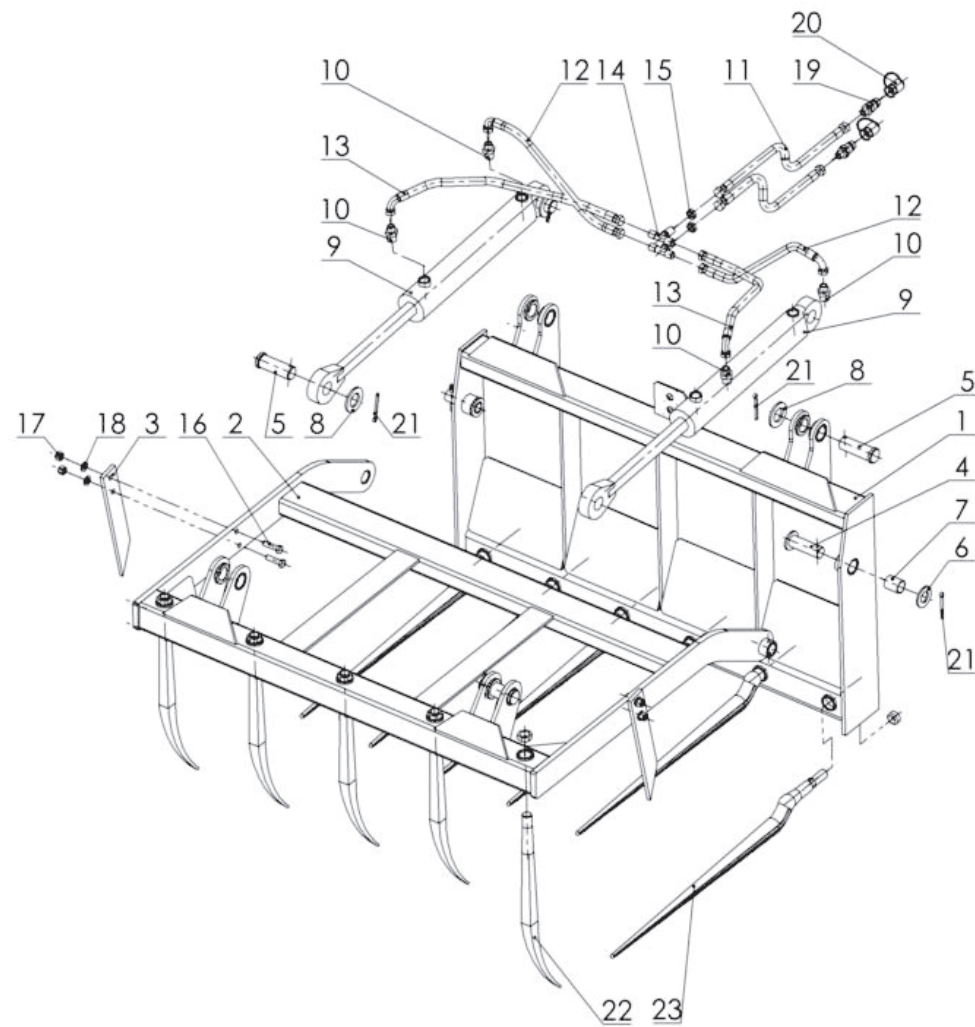


Fig. 22. Silage grip (version with 2 actuators)

**Table no. 22. Silage grip (version with 2 actuators)**

Item	Name of part or assembly	Part number or index						Qty
		Grip type						
		OL.Kr 2 1.2	OL.Kr 2 1.2 E	OL.Kr 2 1.5	OL.Kr2 1.5 E	OL.Kr 2 1.8	OL.Kr 2 1.8 E	
1	Welded frame	OL.KR 2 1.2 01.00.00	OL.KR 2 1.2 01.00.00E	OL.Kr 2 1.5 01.00.00	OL.Kr 2 1.5 01.00.00E	OL.Kr 2 1.8 01.00.00	OL.Kr 2 1.8 01.00.00E	1
2	Movable frame	OL.Kr 2 1.2 02.00.00	OL.Kr 2 1.2 02.00.00	OL.Kr 2 1.5 02.00.00	OL.Kr 2 1.5 02.00.00	OL.Kr 2 1.8 02.00.00	OL.Kr 2 1.8 02.00.00	1
3	Side finger	OL.KR 00.00.03	OL.KR 00.00.03	OL.KR 00.00.03	OL.KR 00.00.03	OL.KR 00.00.03	OL.KR 00.00.03	2
4	Frame pin set	OL.KR 00.04.00	OL.KR 00.04.00	OL.KR 00.04.00	OL.KR 00.04.00	OL.KR 00.04.00	OL.KR 00.04.00	2
5	Actuator pin	OL.KR 00.00.05	OL.KR 00.00.05	OL.KR 00.00.05	OL.KR 00.00.05	OL.KR 00.00.05	OL.KR 00.00.05	4
6	Plain washer, 31	23P30OOC	23P30OOC	23P30OOC	23P30OOC	23P30OOC	23P30OOC	2
7	Self-lubricating bush	POD-LOZ-000115	POD-LOZ-000115	POD-LOZ-000115	POD-LOZ-000115	POD-LOZ-000115	POD-LOZ-000115	2
8	Plain washer, 36	23P36OOC	23P36OOC	23P36OOC	23P36OOC	23P36OOC	23P36OOC	4
9	Hydraulic actuator	24SCJ2F63/36/320Z	24SCJ2F63/36/320Z	24SCJ2F63/36/320Z	24SCJ2F63/36/320Z	24SCJ2F63/36/320Z	24SCJ2F63/36/320Z	2
10	Straight coupling	24KP22/18	24KP22/18	24KP22/18	24KP22/18	24KP22/18	24KP22/18	4
11	Flexible hydraulic line	24PAA10-1500 10/13	24PAA/111/10 L-2000	24PAA10-1500 10/13	24PAA/111/10 L-2000	24PAA10-1500 10/13	24PAA/111/10 L-2000	2
12	Flexible hydraulic line	POD-HPR-000233	POD-HPR-000233	POD-HPR-000233	POD-HPR-000233	POD-HPR-000233	POD-HPR-000233	2
13	Flexible hydraulic line	24PAA90/111/10-700	24PAA90/111/10-700	24PAA90/111/10-700	24PAA90/111/10-700	24PAA90/111/10-700	24PAA90/111/10-700	2
14	Tee- connector partition	24KZTG18/18/18	24KZTG18/18/18	24KZTG18/18/18	24KZTG18/18/18	24KZTG18/18/18	24KZTG18/18/18	2
15	Locknut	24P18/1.5	24P18/1.5	24P18/1.5	24P18/1.5	24P18/1.5	24P18/1.5	2
16	Bolt, M12x45	23S12/45OC	23S12/45OC	23S12/45OC	23S12/45OC	23S12/45OC	23S12/45OC	4

17	Self-locking nut, M12	23NS12OC	23NS12OC	23NS12OC	23NS12OC	23NS12OC	23NS12OC	4
18	Plain washer, 13	23P12OC	23P12OC	23P12OC	23P12OC	23P12OC	23P12OC	4
19	Euro valve-plug	24ZWE13-M18X1.5	24ZWE13-M18X1.5	24ZWE13-M18X1.5	24ZWE13-M18X1.5	24ZWE13-M18X1.5	24ZWE13-M18X1.5	2
20	Plug valve cap	24ZWNE13	24ZWNE13	24ZWNE13	24ZWNE13	24ZWNE13	24ZWNE13	2
21	Cotter pin, 6.3x63	23Z6/63	23Z6/63	23Z6/63	23Z6/63	23Z6/63	23Z6/63	6
22	Bent finger	25PW (5 pcs.)	25PW (5 pcs.)	25PW (6 pcs.)	25PW (6 pcs.)	25PW (8 pcs)	25PW (8 pcs)	5, 6, 8
23	Straight finger	25PWW880 (6 pcs.)	25PWW880 (6 pcs.)	25PWW880 (7 pcs.)	25PWW880 (7 pcs.)	25PWW880 (9 pcs.)	25PWW880 (9 pcs.)	6, 7, 9

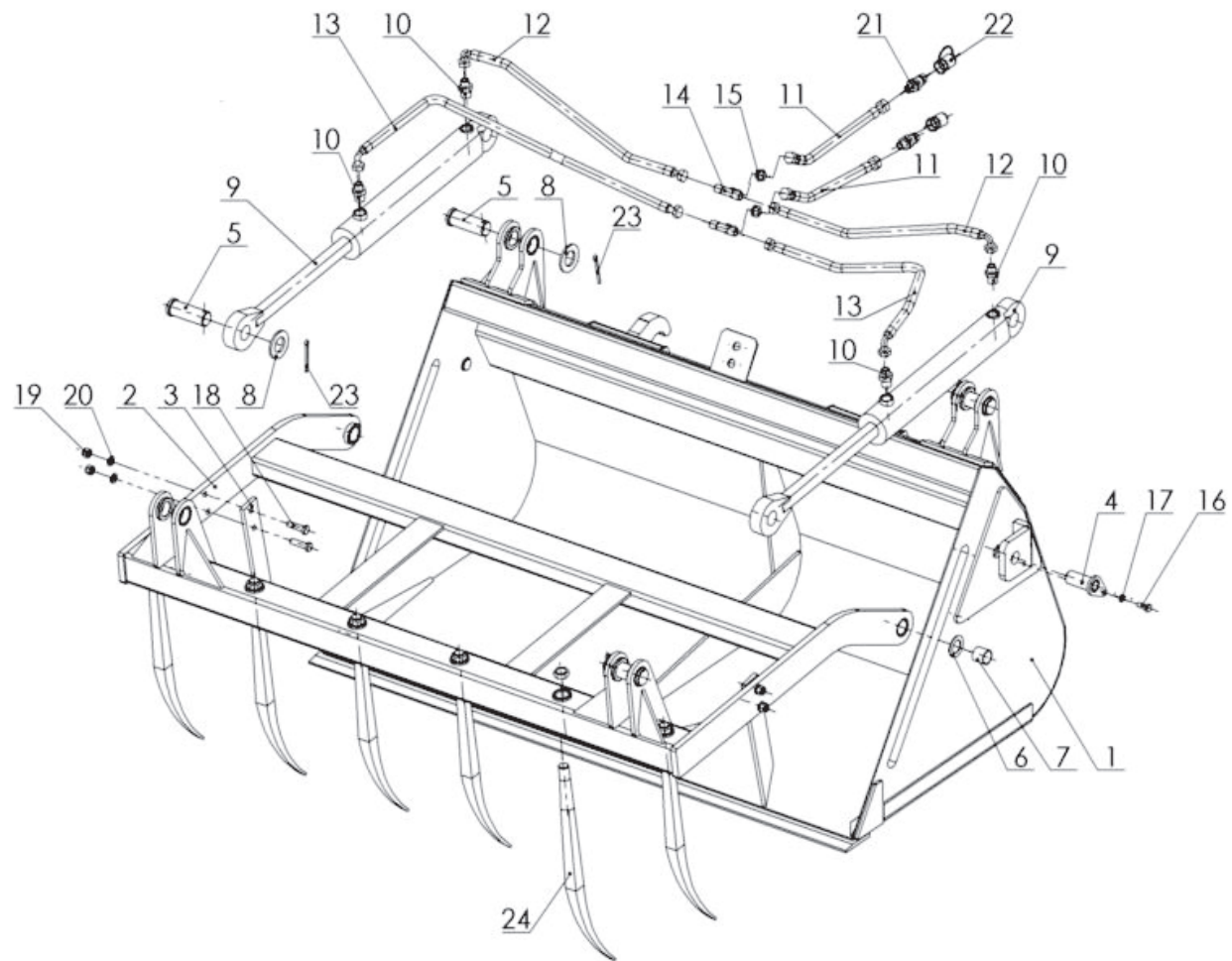


Fig. 23. Grip bucket

**Table no. 23. Grip bucket.**

Item	Name of part or assembly	Part number or index				Qty
		Bucket type				
		OL.LCh 1.5	OL.LCh 1.5 E	OL.LCh 1.8	OL.LCh 1.8E	
1	Welded bucket	OL.LCH 1.5 01.00.00.1	OL.LCH 1.5 01.00.00.1E	OL.LCH 1.8 01.00.00.1	OL.LCH 1.8 01.00.00.1E	1
2	Movable frame	OL.LCH 1.5 02.00.00E	OL.LCH 1.5 02.00.00E	OL.LCH 1.8 02.00.00E	OL.LCH 1.8 02.00.00E	1
3	Side finger	OL.KR 00.00.03	OL.KR 00.00.03	OL.KR 00.00.03	OL.KR 00.00.03	2
4	Frame pin set	OL.LCh 00.05.00	OL.LCh 00.05.00	OL.LCh 00.05.00	OL.LCh 00.05.00	2
5	Actuator pin	OL.Kr 00.00.05	OL.Kr 00.00.05	OL.Kr 00.00.05	OL.Kr 00.00.05	4
6	Special washer	OL.LCh 00.00.24	OL.LCh 00.00.24	OL.LCh 00.00.24	OL.LCh 00.00.24	2
7	Self-lubricating bush	POD-LOZ-000112	POD-LOZ-000112	POD-LOZ-000112	POD-LOZ-000112	2
8	Plain washer, 37	23P36OOC	23P36OOC	23P36OOC	23P36OOC	4
9	Hydraulic actuator	24SCJ2F63/36/320Z	24SCJ2F63/36/320Z	24SCJ2F63/36/320Z	24SCJ2F63/36/320Z	2
10	Straight coupling	24KP22/18	24KP22/18	24KP22/18	24KP22/18	4
11	Hydraulic hose	24PAA10-1500 10/13	24PAA/111/10 L-2000	24PAA10-1500 10/13	24PAA/111/10 L-2000	2
12	Hydraulic hose	24PAA90/111/10-700	24PAA90/111/10-700	24PAA90/111/10 L-800	24PAA90/111/10 L-800	2
13	Hydraulic hose	24PA90A10-1050	24PA90A10-1050	24PAA90/111/10-L1100	24PAA90/111/10-L1100	2
14	Partition tee-connector	24KZTG18/18/18	24KZTG18/18/18	24KZTG18/18/18	24KZTG18/18/18	2
15	Locknut	24P18/1.5	24P18/1.5	24P18/1.5	24P18/1.5	2
16	Bolt, M10x25	23S10/25OC 8.8	23S10/25OC 8.8	23S10/25OC 8.8	23S10/25OC 8.8	2
17	Plain washer, 10.5	23P10 82005	23P10 82005	23P10 82005	23P10 82005	2
18	Bolt, M12x45	23S12/45OC	23S12/45OC	23S12/45OC	23S12/45OC	4
19	Self-locking nut, M12	23NS12OC	23NS12OC	23NS12OC	23NS12OC	4
20	Plain washer, 13	23P12OC	23P12OC	23P12OC	23P12OC	4
21	Euro valve-plug	24ZWE13-M18X1.5	24ZWE13-M18X1.5	24ZWE13-M18X1.5	24ZWE13-M18X1.5	2
22	Plug valve cap	24ZWNE13	24ZWNE13	24ZWNE13	24ZWNE13	2



23	Cotter pin, 6.3x63	23Z6/63	23Z6/63	23Z6/63	23Z6/63	4
24	Bent finger	25PW (6 pcs.)	25PW (6 pcs.)	25PW (8 pcs)	25PW (8 pcs)	6, 8

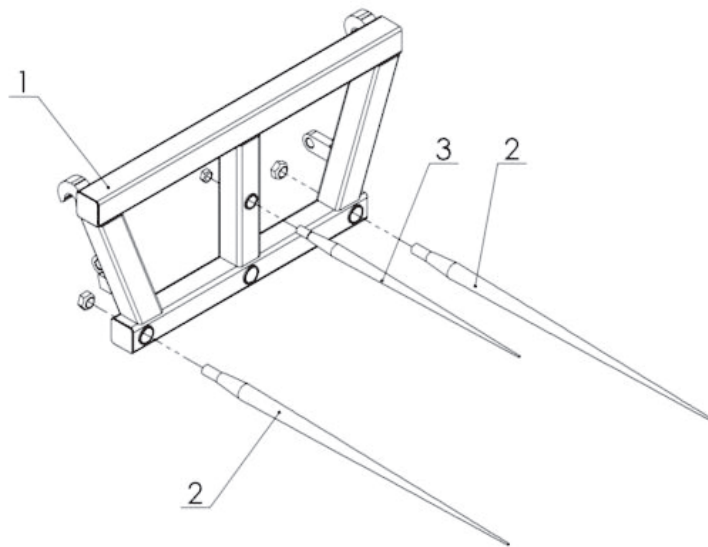


Fig. 24 Bale fork.

**Table no. 24. Bale fork.**

Item	Name of assembly or part	Part number or index		Qty
		Version SMS	Version EURO	
1	Fork frame	OL.WB 01.00.00	OL.WB 01.00.00E	1
2	Straight finger L=1100	POD-ODL-000003-1	POD-ODL-000003-1	2
3	Straight finger L=800	POD-ODL-000002-1	POD-ODL-000002-1	1

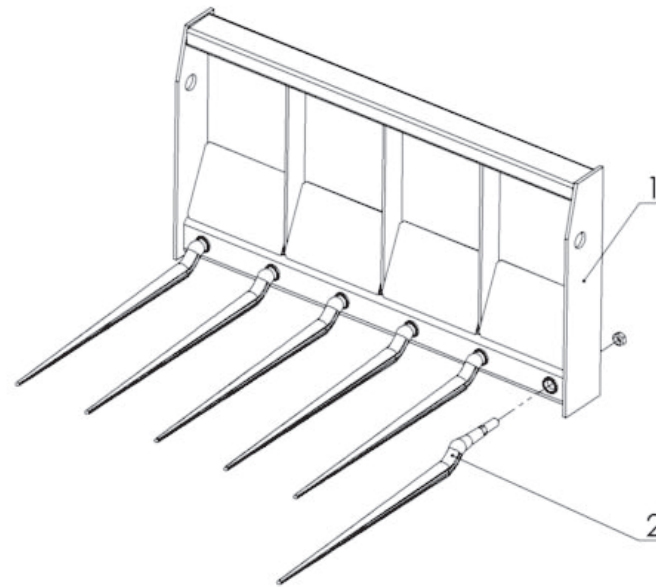


Fig. 25. Manure fork.

**Table no. 25. Manure fork.**

Item	Name of part or assembly	Part number or index						Qty
		Fork type						
		OL.Wo 1.2	OL.Wo 1.2 E	OL.Wo 1.5	OL.Wo 1.5 E	OL.Wo 1.8	OL.Wo 1.8 E	
1	Welded frame	OL.WO 1.2 01.00.00	OL.WO 1.2 01.00.00E	OL.WO 1.5 01.00.00	OL.WO 1.5 01.00.00E	OL.WO 1.8 01.00.00	OL.WO 1.8 01.00.00E	1
2	Straight finger	25PWW880 (6 pcs.)	25PWW880 (6 pcs.)	25PWW880 (7 pcs.)	25PWW880 (7 pcs.)	25PWW880 (9 pcs.)	25PWW880 (9 pcs.)	6, 7, 9

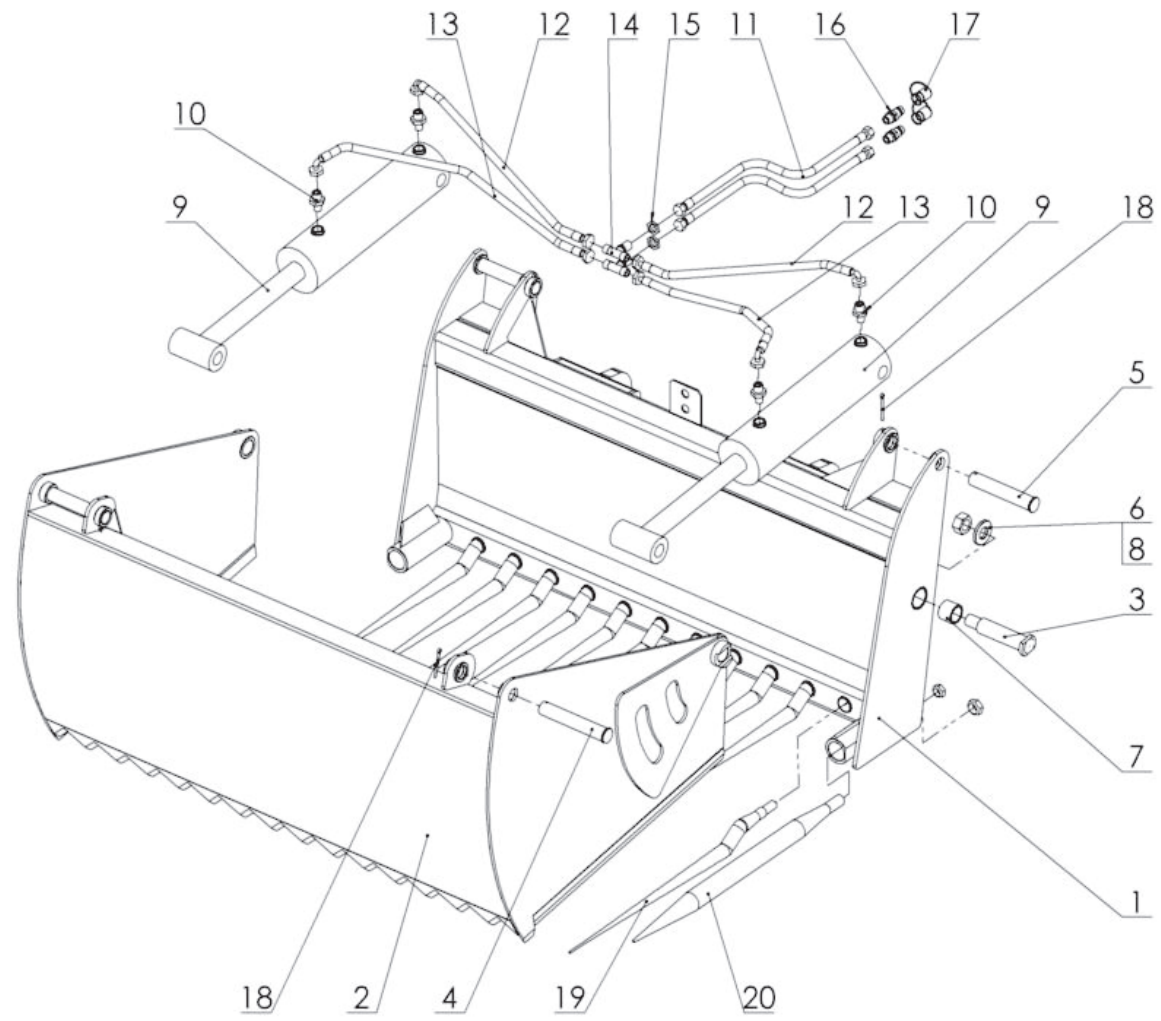


Fig. 26. Silage cutter.

**Table no. 26. Silage cutter.**

Item	Name of part or assembly	Part number or index				Qty
		Cutter type				
		OŁ.Wk 1.2	OŁ.Wk 1.2 E	OŁ.Wk 1.5	OŁ.Wk 1.5 E	
1	Fixed frame	OL.WK 1.2 01.00.00	OL.WK 1.2 01.00.00E	OL.WK 1.5 01.00.00	OL.WK 1.5 01.00.00E	1
2	Movable frame	OL.WK 1.2 02.00.00.1	OL.WK 1.2 02.00.00.1	OL.WK 1.5 02.00.00.1	OL.WK 1.5 02.00.00.1	1
3	Frame pin	OL.WK 1.2 00.00.03.2	OL.WK 1.2 00.00.03.2E	OL.WK 00.00.03.1	OL.WK 00.00.03.1	2
4	Actuator pin I	OL.WK 1.2 00.00.04.1	OL.WK 1.2 00.00.04.1	OL.WK 00.00.04	OL.WK 00.00.04	2
5	Actuator pin II	OL.WK 1.2 00.00.05	OL.WK 1.2 00.00.05	OL.WK 00.00.05	OL.WK 00.00.05	2
6	Washer	OL.WK 00.00.06	OL.WK 00.00.06	OL.WK 00.00.06	OL.WK 00.00.06	2
7	Self-lubricating bush	25T40/50/40	25T40/50/40	25T40/50/40	25T40/50/40	4
8	Self-locking nut, M30	POD-ELZ-000042-1	POD-ELZ-000042-1	POD-ELZ-000042-1	POD-ELZ-000042-1	2
9	Hydraulic actuator	POD-HSL-000064	POD-HSL-000064	24SCJ-S43-110/50/350	24SCJ-S43-110/50/350	2
10	Straight coupling	POD-HKR-000084	POD-HKR-000084	POD-HKR-000084	POD-HKR-000084	4
11	Hydraulic hose	POD-HPR-000152	POD-HPR-000356	POD-HPR-000152	POD-HPR-000356	2
12	Hydraulic hose	POD-HPR-000376	POD-HPR-000376	POD-HPR-000125	POD-HPR-000125	2
13	Hydraulic hose	POD-HPR-000355	POD-HPR-000355	POD-HPR-000151	POD-HPR-000151	2
14	Partition tee-connector	24KT22/22/22	24KT22/22/22	24KT22/22/22	24KT22/22/22	2
15	Locknut	24P22/1.5	24P22/1.5	24P22/1.5	24P22/1.5	2
16	Euro valve-plug	24ZWE13	24ZWE13	24ZWE13	24ZWE13	2
17	Plug valve cap	24ZWNE13	24ZWNE13	24ZWNE13	24ZWNE13	2
18	Cotter pin	23Z6/63	23Z6/63	23Z6/63	23Z6/63	4
19	Straight finger	POD-ODL-000001-1 (7 pcs.)	POD-ODL-000001-1 (7 pcs.)	POD-ODL-000001-1 (11 pcs.)	POD-ODL-000001-1 (11 pcs.)	7, 11
20	Straight finger, thick	25PWW820	25PWW820	25PWW820	25PWW820	2

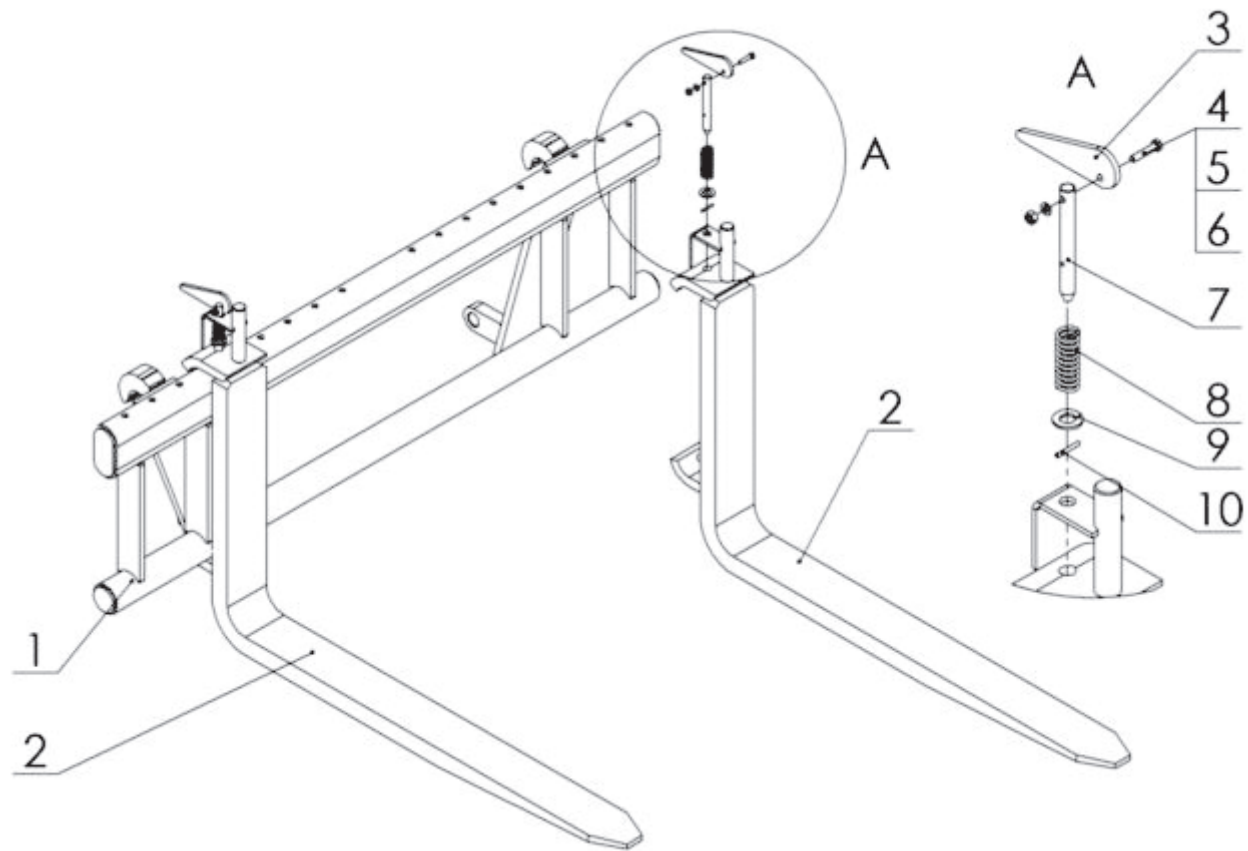


Fig. 27. Pallet slide fork.

**Table no. 27. Pallet slide fork.**

Item	Name of part or assembly	Part number or index				Qty
		Fork type				
		OL.WP1.0	OL.WP1.0E	OL.WP1.2	OL.WP1.2E	
1	Fork frame	OL.RT-01.00.00.1	OL.RE-01.00.00.1	OL.RT-01.00.00.1	OL.RE-01.00.00.1	1
2	Welded clamp	OL.LW1.0-01.01.00	OL.LW1.0-01.01.00	OL.LW1.2-01.01.00	OL.LW1.2-01.01.00	2
3	Lock-off lever	OL.LW-01.00.02	OL.LW-01.00.02	OL.LW-01.00.02	OL.LW-01.00.02	2
4	Bolt, M6x35	23S6/35OC	23S6/35OC	23S6/35OC	23S6/35OC	2
5	Plain washer, 6.4	23P6OOC	23P6OOC	23P6OOC	23P6OOC	2
6	Nut, M6	23NS6OC	23NS6OC	23NS6OC	23NS6OC	2
7	Lock-off axis	OL.LW-01.00.03	OL.LW-01.00.03	OL.LW-01.00.03	OL.LW-01.00.03	2
8	Spring	23S3/22/63	23S3/22/63	23S3/22/63	23S3/22/63	2
9	Plain washer, 15	23P14OC	23P14OC	23P14OC	23P14OC	2
10	Spring pin	23K4/30	23K4/30	23K4/30	23K4/30	2